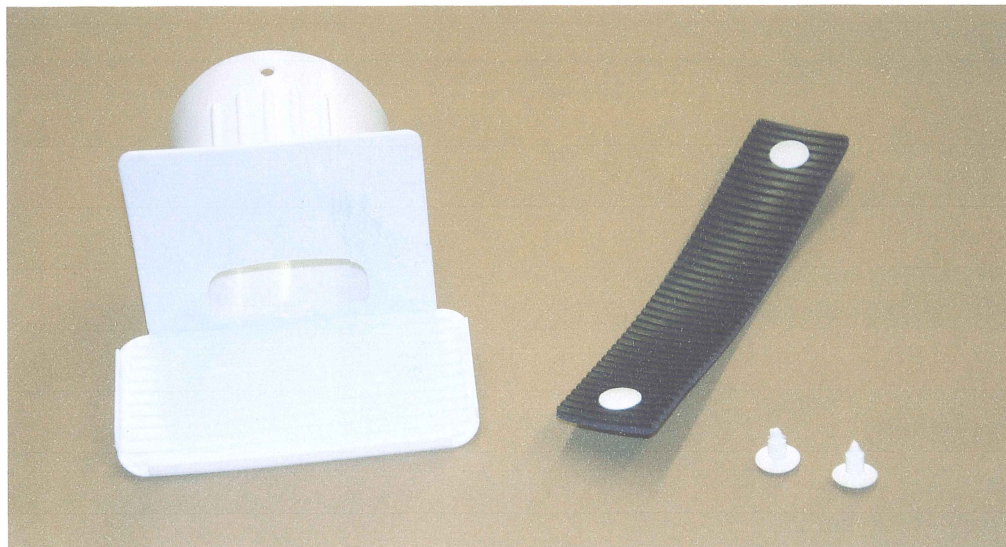
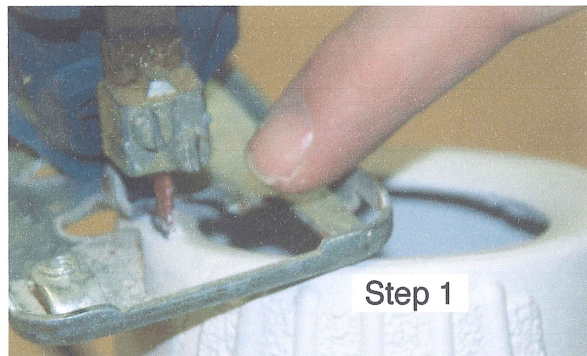


# Troyer Tunnels Installing onto Troyer Horizontal Gourds



**PARTS**  
**TROYER TUNNEL**  
**4 PUSH-IN BUTTONS**  
**TREAD TO BE RE-USED FROM GOURD OR PURCHASE NEW**

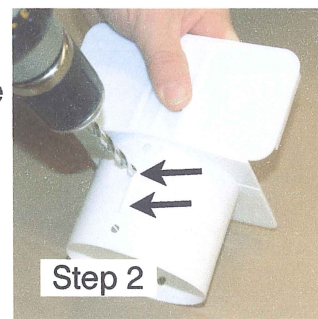
Step 1) Remove the grommet-tail-prop as well as your traction mat. To remove the mat cut the prongs extruding from the underside of the gourd. Using a saber saw remove the lip from the front nose of the gourd.



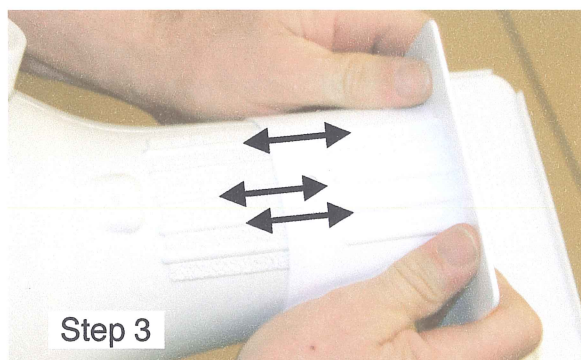
Once removed use sand paper to clean the edge up. The Troyer Horizontal gourd should look like the photo step 1A .Set aside and get your Troyer Tunnel.



Step 2) Working from the underside of the tunnel you will drill a 1/4" hole at the very top of the center bead. see photo.

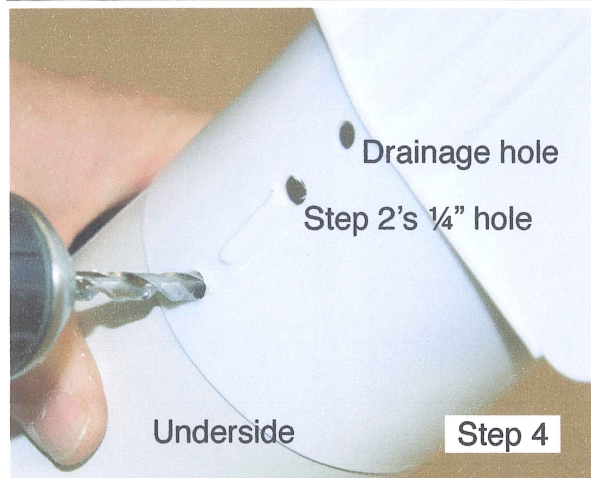
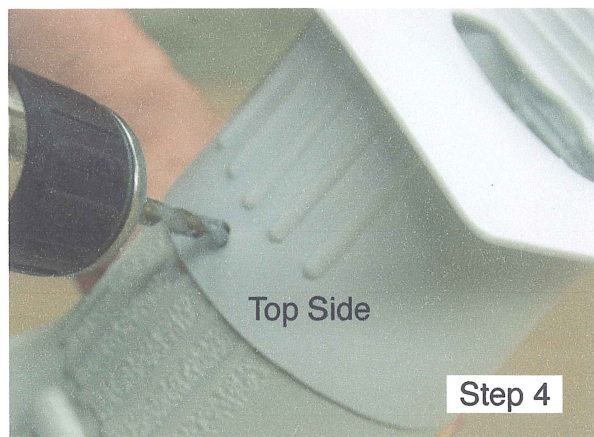


Step 3) Pick up your modified Troyer Horizontal Gourd and place the belly of the gourd onto your belly. Place the tunnel onto the nose of the gourd and pull the tunnel towards your belly, Align all the ridges of the tunnel to the ridges on the nose of the gourd. Pull in the tunnel toward you till it will come in no further.



## Troyer Tunnels Installing onto Troyer Horizontal Gourds

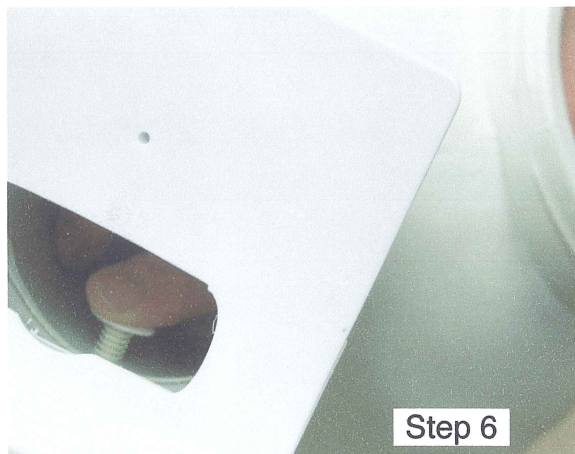
Step 4) Drill a ¼" hole thru the hole that is already in the tunnel (found at the top near the center ridge) into the troyer gourd. Turn the gourd over and again drill a hole into the LOWER hole (below the hole you drilled in step 2) of the tunnel into the gourd. See photo.



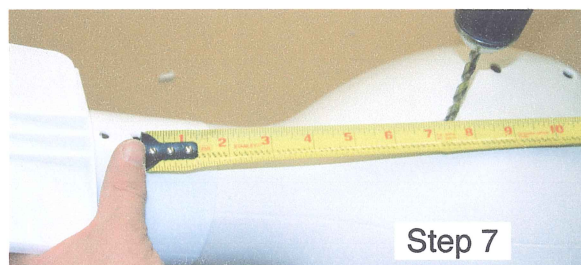
Step 5) Insert one of the push-in buttons into the top of the gourd thru the tunnel into the gourd.



Step 6) Insert a push-in button from inside the gourd. To accomplish this use the access port and reach inside the gourd. You will be inserting this button into the ¼" hole you drilled in Step 4 (the hole closet to the belly of the gourd)



Step 7) Working from the underside of the gourd we need to drill one more ¼" hole for the traction mat. Using a rule you will want to measure 7-½" from Step

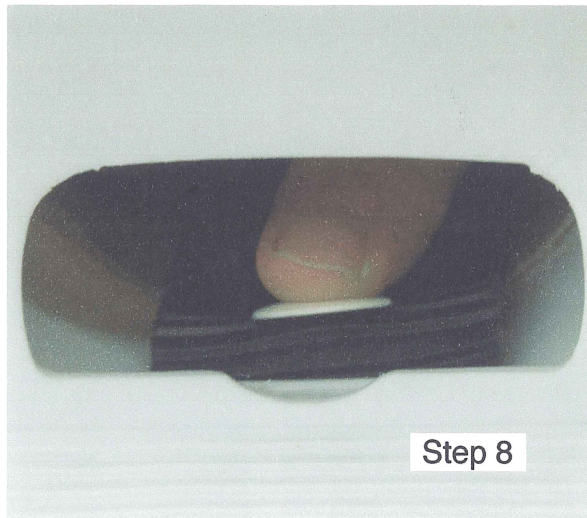


2's hole directly down the center of the bottom of the gourd. Mark and drill a ¼" hole.

Step 8) Reinstalling the traction mat. You have either purchased a new mat or are re-using the mat that was in your gourd. (Replacement Rubber Traction Treads can be purchased from the Birds Paradise). When re-using your mat you will instal the last 2 push-in pins so that the flat button is on the grooved side of mat. Again using your access port insert your hand with the tread. Bring the tread up into the nose of the gourd. You will want to install the tread so that the end of the tread is pushed up and underneath the small plastic step-up found underneath the entrance and inside the tunnel. Once the tread is underneath the step-up, the pin in the tread will be

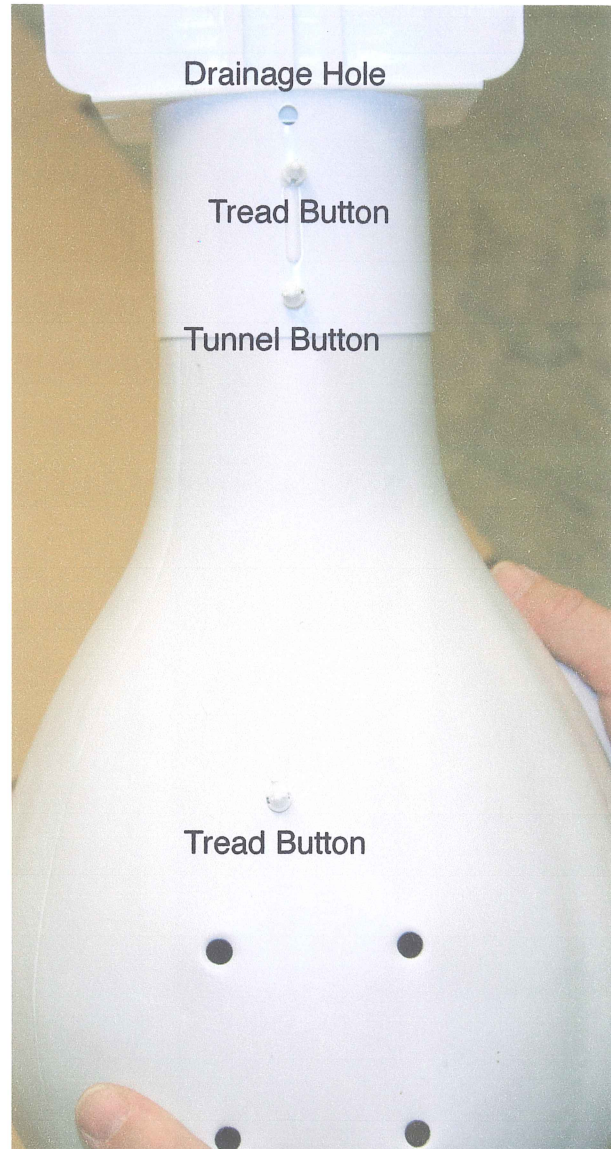
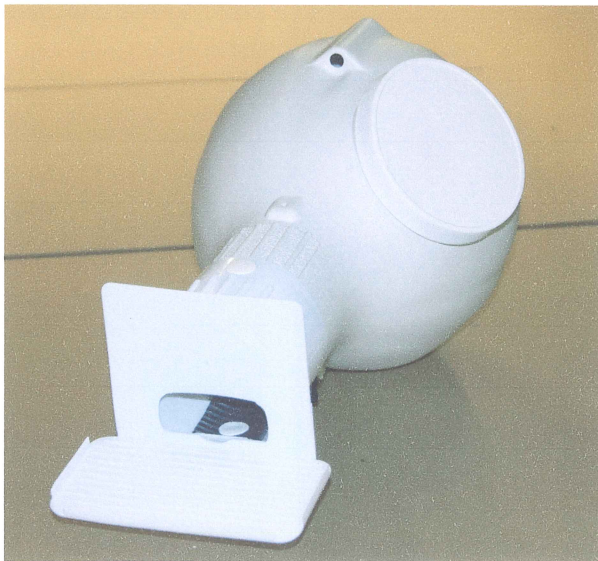
## Troyer Tunnels Installing onto Troyer Horizontal Gourds

perfectly aligned with the ¼" hole you drilled in Step 2. Push in the button.



Step 9) Take hold of the opposite end of the traction mat and align the push-in button of the mat to the ¼" hole you drilled in step 7, and push the prong of the button into the hole.

You have completed the modification and you are ready to hang the gourd.



**VERY IMPORTANT!!! A MUST!!!**  
**Before your martins arrive place**  
**2-3 large handfuls of pine**  
**needles or cedar shaving into**  
**the gourd.**