



## Manufacturing Attractive Bird Products

71024 Co. Rd. 13 Nappanee, IN 46550 • Toll Free (866) 546-0423  
(574) 773-4975 • FAX (574) 773-7282

### Trendsetter Crossarm

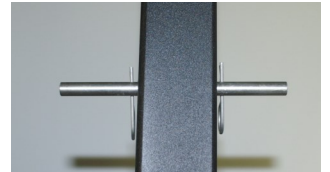
**LOCATION** Your martin house should be as far away from trees as possible. An average minimum distance of 40 feet away from trees is required. Martins like wide open flight paths around their housing. Think of your martin housing being an airport and the martin as the airplane. Martins prefer to have two or more runways to land and take off. Also, martin housing should be no closer than 25 feet or no further than 120 feet from human housing. Martins like to be close to people.

**STEP 1:** Dig a square hole 16" wide, 16" long and 30" deep. Remove the 1-1/2" square ground stake from the steel pole. The painted end with angle welded to the side is to be above ground. The welded nut at the opposite end, is for shipping, and will be in the cement at the bottom of your hole. Standing the ground stake in the center of your hole, fill the hole with wet premixed cement to ground level. Be sure the ground stake is plumb and leave 12" above the cement. Also fill the inside of the ground stake with cement, to prevent water from accumulating and freezing inside. The pole will slide over the ground stake later, so be sure to wipe clean the ground stake of any excess cement. The dimensions above require 7 bags of dry cement mix available at your local building store.



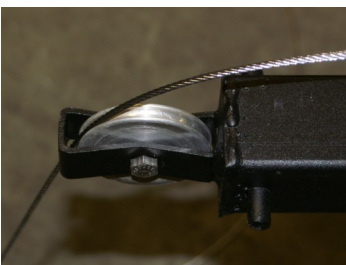
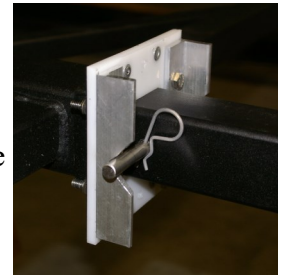
**STEP 2:** Insert the aluminum pulley into the pulley assembly located on top of the pole. Insert the 5/16" x 1-1/4" bolt through the assembly and pulley, secure with 5/16" lock nut.

**STEP 3:** Insert the 6" stop pin into the predrilled hole located at the top of the pole and secure with a hitch pin on both sides.



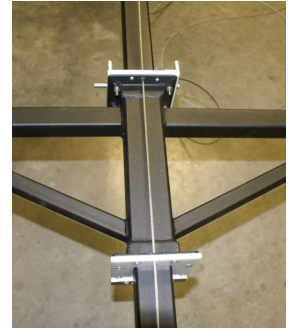
**STEP 4:** Attach two 34-1/2" top perches to the top of the pulley assembly with 1/2" bolt.

**STEP 5:** It is easiest to mount the crossarm onto the pole if the pole is laying horizontal 20" or higher above the ground. This will allow the crossarm to slide horizontal on the pole without touching the ground. Insert the bottom end of the pole into the plastic guide located on top of the crossarm. The top is with two L-brackets. The crossarm needs to be turned so, when slid to the top of pole, the stop pin in step 3 will set into the v-notch cut into the L-brackets. Slide the crossarm horizontally until the pole is inserted through the bottom plastic glide. Continue to slide until the bottom of the crossarm is above the predrilled winch holes.



**STEP 6:** Feed the cable through the top plastic glide and through the pulley at the top of the pole. The cable can not be twisted around the pole.

STEP 7: Bring the end of the cable back down the opposite side of the pole and feed through both top and bottom plastic glides of the crossarm.

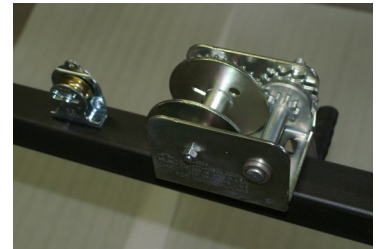


STEP 8: Thread the winch handle onto the winch. Slide the spring onto the winch beside the handle. Secure the spring with the 3/4" wide nut.



STEP 9: Fasten the winch to the pole using 3/8" x 3-1/4" bolts, 3/8" flat washers and 3/8" lock nuts. Winch needs to be fastened on the same side of the pole in which the cable is coming out from the bottom of the crossarm.

STEP 10: Fasten small pulley to the pole above the winch using #10 x 2-1/2" bolts and nuts.



STEP 11: Feed the cable through the small pulley. This small pulley will keep the cable close to the pole and aligned with the bottom plastic guide.

STEP 12: Wind the end of cable into the side of winch. After winding the cable, insert the cable end into the cable stop that is provided. Using a pliers or channel locks, pinch the cable stop enough to keep the stop on the cable. This stop is to keep the cable end from fraying.

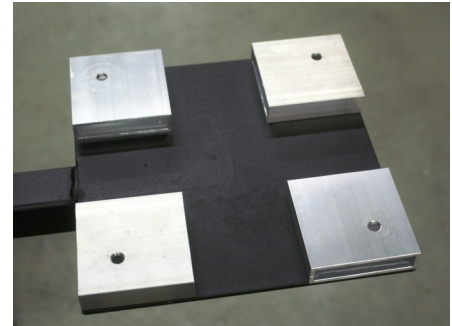
STEP 13: Slide the crossarm down the pole until it is close to the small pulley. **IMPORTANT:** The cable must be seated in the pulley groove, located on top of the pole, or damage may be caused to the cable. Your crossarm is now ready



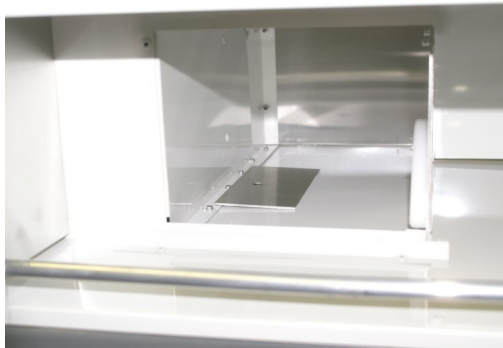
to be erected. The lower you keep the crossarm on the pole when erecting, the easier it is to balance. Obtain assistance when erecting as working with objects above your head can cause serious injury. Set the crossarm, with pole, vertically over the ground stake and slide the pole down to ground level.

# Mounting Martin houses

STEP 14: Position, by aligning the holes, four of the 3" x 3" rectangle aluminum tube on each mounting plate on the crossarm. These aluminum tubes are spacers to allow ventilation in your martin houses.



STEP 15: The mounting holes have been predrilled into the bottom of each martin house. Position the martin houses on top of the 3" x 3" rectangle aluminum tubes aligning the holes. NOTE: You may want to consider step 21 when determining which direction you want the martin house to be positioned.



STEP 16: Place one 2-1/4" x 4-1/2" aluminum plate inside each of the four bottom compartments aligning the holes. This plate is for adding stability to the floor.

STEP 17: Insert 1-3/4 bolt in each of the four holes of both martin houses. Bolt both martin houses to the mounting plates tightening with flange nuts.

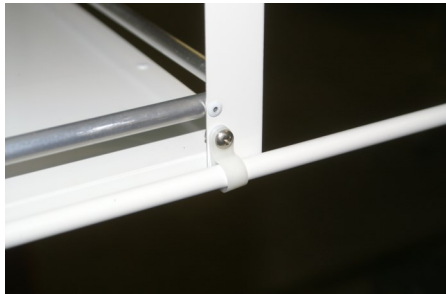
STEP 18: Place the 1/2" bolt through both center holes of the 23-3/4" top perch rods.

STEP 19: Place the bolt, with perch rods, through the center hole of the roof cover. Thread the hex nut onto the bolt. Tighten the bolt to hold the perch rods in the position you choose to place them.



STEP 20: Position on the roof, one roof cover per martin house. Aligning the predrilled holes, attach using 1/4" screws.

STEP 21: Slide two plastic loops onto each of the four white perch rods. Attach one perch rod per side by inserting a 3/8" bolt through the loop and into the predrilled hole located at the corner of the bottom porch. Secure both loops per rod with a #8 nut.



STEP 22: Turn the winch handle to raise and lower the cross arm. Once the crossarm reaches the top of the pole, the aluminum stops on either side of the top plastic guide will stop the crossarm. DO NOT OVERTIGHTEN THE CABLE OR DAMAGE MAY OCCUR TO THE CROSSARM AND OR MARTIN HOUSES.

**CARING FOR YOUR MARTIN HOUSES:** Inside each compartment, towards the back, is a ventilation port. Open the ventilation port during the warm part of the summer. The ventilation port will allow the air to circulate through the compartment. Oil the pulley once a year to keep it working smoothly. Remove the nests and clean the house at the end of each season. It is highly recommended to store the complete system inside for winter storage. Check all the bolts to make sure they are all tight before putting the system up each spring.