



Manufacturing Attractive Bird Products

71024 Co. Rd. 13 Nappanee, IN 46550 • Toll Free (866) 546-0423
(574) 773-4975 • FAX (574) 773-7282

Trendsetter 8, 12, and 16 Compartment Martin House Systems

SAFETY INSTRUCTIONS: Read and understand all of the instructions and cautions prior to the assembly and installation of the martin house. Assemble and install martin house only to the following instructions as improper installation could result in damage or serious injury. When installing, be aware that the edges of aluminum may be sharp.

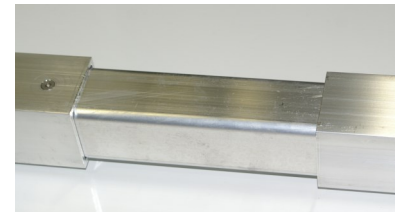
LOCATION Your martin house should be as far away from trees as possible. An average minimum distance of 40 feet away from trees is required. Martins like wide open flight paths around their housing. Think of your martin housing being an airport and the martin as the airplane. Martins prefer to have two or more runways to land and take off. Also, martin housing should be no closer than 25 feet or no further than 120 feet from human housing. Martins like to be close to people.

STEP 1: Dig a square hole 14" wide, 14" long and 24" deep. Remove the 1-1/2" square steel ground stake from the aluminum pole. The painted end with a piece of welded angle along the side is the end which is to be above ground. The welded clip at the opposite end, is for shipping, and will be in the cement at the bottom of your hole. Standing the ground stake in the center of your hole, fill the hole with wet premixed cement to ground level. Be sure the ground stake is plumb and leave 24" above the cement. Also fill the inside of the ground stake with cement, to prevent water from accumulating and freezing inside. The pole will slide over the ground stake later, so be sure to wipe clean the ground stake of any excess cement. The dimensions above require five 80 lb bags of dry cement mix available at your local building store.

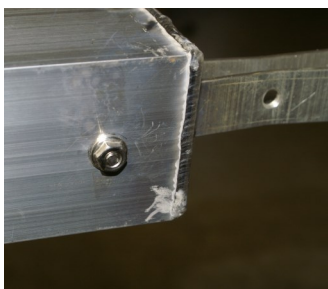
STEP 2: Remove the winch from inside one of the martin house compartments. Unthread the nut that is on the winch. Slide the handle on and rethread the nut back onto the winch.



STEP 3: Rotate the top and bottom pole sections so the numbers are aligned. Slide the splice support of the top section (section with pulley assembly welded at one end) into the numbered end of the bottom section. The two sections are held together by friction and gravity once erected.



STEP 4: Insert the 1/4" x 2-1/4" bolt through the hole located towards the top end of the pole and secure with 1/4" flange nut. This is the stop when raising your martin house.



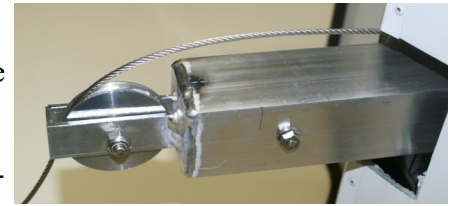
STEP 5: Insert the aluminum pulley into the pulley assembly located on top of the pole. Insert the 5/16" x 1-1/4" bolt through the assembly and pulley, secure with 5/16" lock nut.



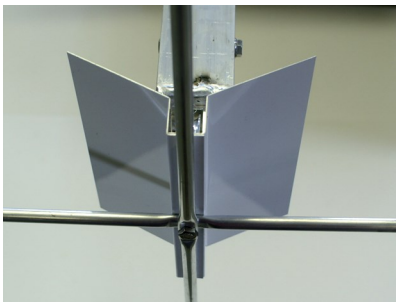
STEP 6: IMPORTANT: The pole needs to be turned so the pulley, on top of the pole, is lined up with the cable that is located under the roof of your martin house. Insert bottom end of the pole (opposite end of the pulley assembly) into plastic glide located under the roof of martin house. Slide house upward onto the pole until the pole extends out from the bottom of the house and the house is above the winch holes that are predrilled into the pole.

STEP 7: Feed the cable through the top of the aluminum pulley. The cable can not be twisted around the pole.

STEP 8: Tape the end of the cable to the thin wire that located under the roof of your house. The wire is inserted through the both bottom and top plastic glides. This wire will allow you to feed the cable trough the martin house. Carefully pull the wire, with cable, out through the bottom of the martin house.



STEP 9: Fasten the roof cover and top perches onto the pulley assembly, on top of the pole, using 3/4" bolt. Slide the house to the top of pole making sure the cable is not twisted around the pole and is lined up with the plastic glide. The roof cover may need to be adjusted so it is straight with the martin house roof.

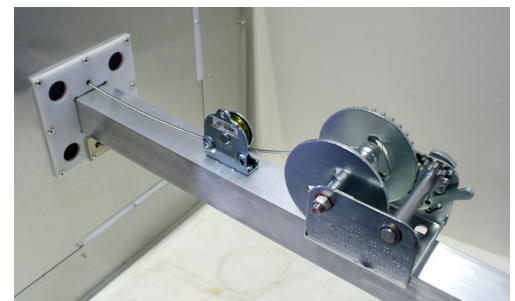


STEP 10: Fasten the winch to the pole using 1/4" x 2-3/4" bolts, 3/8" flat washers and 1/4" flange nuts. **NOTICE:** Winch needs to be fastened onto the pole on the same side as the cable is coming out from the bottom of the house. It is important that the cable is not twisted around the

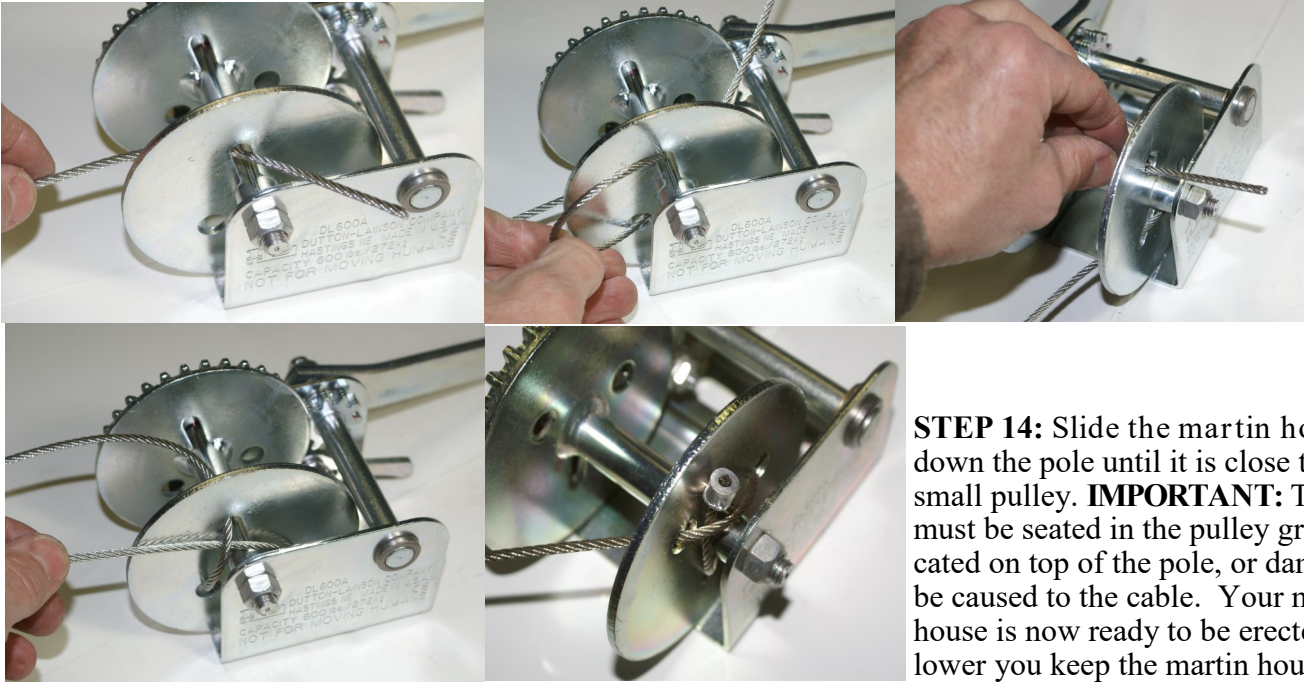
pole.

STEP 11: Fasten small pulley to the pole above the winch using #10 x 2-1/2" bolt and #10 nut.

STEP 12: Feed the cable through the small pulley. This small pulley will keep the cable close to the pole and aligned with the bottom plastic guide.



STEP 13: Wind the cable end into the side of winch. After winding the cable, insert the cable end into the cable stop that is provided. Using a pliers or channel locks, pinch the cable stop enough to keep the stop from sliding off of the cable. This stop is to keep the cable end from fraying.



STEP 14: Slide the martin house down the pole until it is close to the small pulley. **IMPORTANT:** The cable must be seated in the pulley groove, located on top of the pole, or damage may be caused to the cable. Your martin house is now ready to be erected. The lower you keep the martin house on the pole when erecting, the easier it is to bal-

ance. Obtain assistance when erecting as working with objects above your head can cause serious injury. Set the martin house, with pole, vertically over the ground stake and slide the pole down to ground level.

STEP 15: Slide two plastic loops onto each of the two white perch rods. Attach one perch rod per side by inserting a 3/8" bolt through the loop and into the predrilled hole located at the corner of the bottom porch. Secure both loops per rod with a #8 nut.



STEP 16: Turn the winch handle to raise and lower the martin house. Once the martin house reaches the top of the pole, the bolt located under the pulley assembly will stop the martin house. **DO NOT OVERTIGHTEN THE CABLE OR DAMAGE MAY OCCUR TO THE MARTIN HOUSE.**

CAUTION: For your safety, do not take your hand off of the winch handle when raising and lowering

or serious injury may occur.

CARING FOR YOUR MARTIN HOUSE: Inside each compartment, towards the back, is a ventilation port. Open the ventilation port during the warm part of the summer. The ventilation port will allow the air to circulate through the compartment. Oil the pulley once a year to keep it working smoothly. Remove the nests and clean the house at the end of each season. It is highly recommended to store the complete system inside for winter storage. Check all the bolts to make sure they are all tight before putting the system up each spring.

Using the Trendsetter Door Track Cleaning Tool

If your door track becomes dirty, slide the cleaning tool from side to side in the door track.

