

# Roosting Arms

Thank you for purchasing this product from the Purple Martin Conservation Association! Your purchase helps fund a variety of education, conservation, and research projects of the PMCA.

Martins love extra places to perch around their housing. These sturdy, solid aluminum arms can be used to turn an extra pole into a perching tree, to add extra perching areas below houses, or just to hang a few extra gourds. Constructed entirely of rustproof materials, these roosting arms will grace any colony site for many years to come.

Roosting arms will fit any pipe from 1-2" inside diameter. (The outside diameter of a standard 2" pipe is 2-3/8" and these arms will fit such a pipe.) These arms are designed for use on telescoping or fixed poles. They won't work on systems that raise and lower with winch or lanyard. They are made from solid aluminum and will easily support the weight of any gourd. Gourds become heavier when laden with nests and babies, so don't hang more gourds than can be securely raised and lowered. For safety's sake, and that of the martins, don't overload any pole system, or it will be rendered more vulnerable to bending in strong winds.

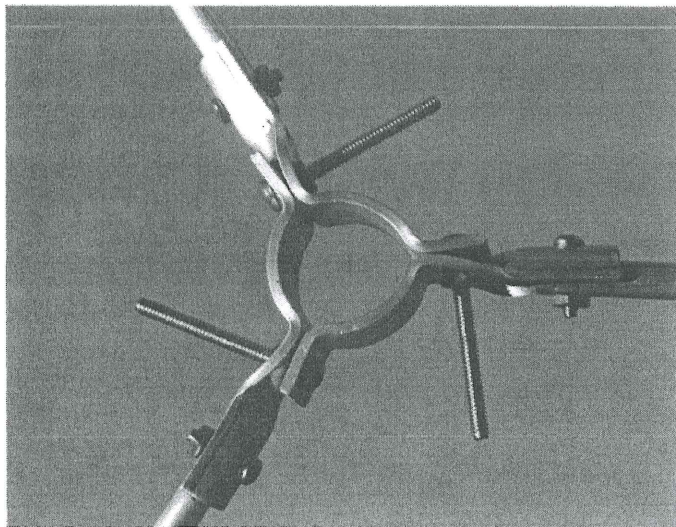
## PARTS:

Each set of Roosting Arms contains:

- 3 aluminum arms
- 6 aluminum brackets
- 6 stainless steel #8 nuts
- 6 stainless steel #8-32 x 3/4" bolts
- 6 stainless steel #10 nuts
- 6 stainless steel #10-24 x 2" bolts

*The different sized nuts and bolts are bagged separately. Be careful not to intermix them.*

- TOOLS:**
- a Phillips head screwdriver
  - a ratchet
  - possibly a helper



## ASSEMBLY:

First, using the short bolts and smaller nuts, attach two brackets to each arm. It's important to fit the bracket onto the arm correctly. The long end of each bracket has a channel and predrilled hole for attaching an arm.

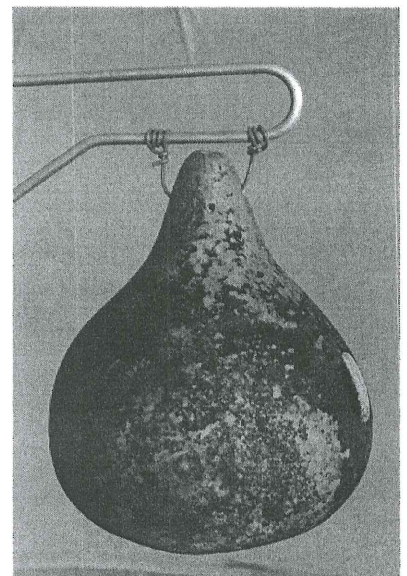
After attaching the six brackets to the upper and lower sections of each arm, fit the three-arm/bracket assemblies around the pole.

Fasten the long bolts and nuts with the assistance of a helper. An alternative is to assemble the roosting arms without the pole, then slip the entire assembly over the pole before tightening.

Tighten all bolts and nuts with screwdriver and pliers; don't hang gourds until the arms are securely fastened to the pole at the desired height.

## ADDING GOURDS:

If using Roosting Arms to hang gourds, the PMCA recommends using #12 (or the stiffer #10) gauge single-strand insulated vinyl-coated SOLID copper wire. Do not use wire with more than one strand of copper inside; it will not hold up and could break. Make sure to space the gourds so that they do not hit each other or the pole in very windy conditions. Check the hardware periodically to make sure everything is tight and secure. The arms can be left up year round or stored for the winter, but always take the gourds down and store them out of the weather at the end of the nesting season. It will be necessary to drill new hanging holes in the gourds so they hang with entrance holes pointed outward.



Purple Martin Conservation Association  
301 Peninsula Drive, Suite 6 • Erie, PA 16505  
814-833-7656 (phone) • 814-833-2451 (fax)  
[www.purplemartin.org](http://www.purplemartin.org) • [info@purplemartin.org](mailto:info@purplemartin.org)

RA1/RA3: 10/07

©2007 PMCA All rights reserved