



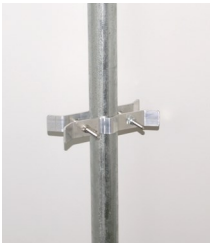
## Manufacturing Attractive Bird Products

71024 Co. Rd. 13 Nappanee, IN 46550 • Toll Free (866) 546-0423  
(574) 773-4975 • FAX (574) 773-7282

# Adjustable Quick Release Pole Guard

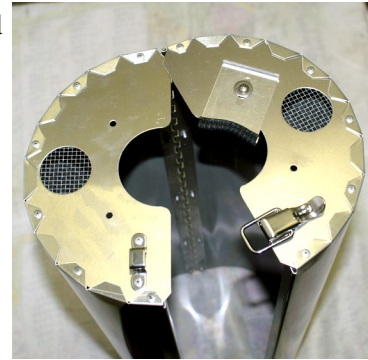
To maximize its effectiveness, mount the pole guard as high as possible above the ground. In most situations, the top of the guard should be at least 4 feet above the ground. The Quick Release Pole Guard is designed for mounting above the rope winder or winch.

## Mounting Instructions



1) Attach the two pole clamps at least 4 feet above the ground using the two 1/4" x 3" bolts with one 1/4" lock nut and 1/4" wing nut. Make sure the mounting clamps are parallel to the ground and each other.

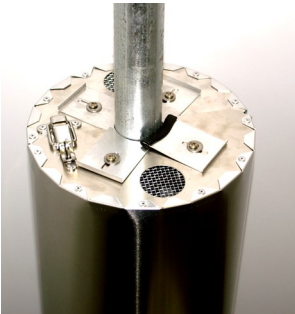
2) Unlatch the top of the aluminum tube. The bottom is held with a key slot. Lay the four slider plates onto the built-in top plate positioning each slider over the predrilled holes. Place one washer onto each of the 4 small bolts. Put one bolt with washer through each of the four slider plates and top plate. Thread one nut onto each bolt only finger tightening so that the slider will slide to adjust to the pole.



3) Slip the tube around the pole above the pole clamps positioning the guard so the rope or cable runs against the slider plate with a rubberized edge. Fasten the latch on top.

4) Push each slider plate towards the pole so that they are snug around the pole. Tighten the bolts to hold the sliders in place. You may need to remove the guard again to have access to the nut underneath each slider plate.

5) Wrap the guard around the pole and insert key slot at the bottom of your guard. Latch the top and allow your guard to hang on the pole clamps.



## Removing and Reattaching the Pole Guard.

1) Unlatch the top

2) Undo the key slot at the bottom.

3) Loosen only the wing nut on the pole clamps. Do not loosen the lock nut. By loosening the wing nut, the pole clamp will slide down the pole. This will allow lowering the martin system to the desired height.

4) To reattach the Pole Guard, slide the pole clamps back up the pole to your desired height. Tighten the wing nut making sure the pole clamp is parallel to the ground and to each other. Repeat steps 3 and 5 from Mounting Instructions.

**PLEASE NOTE:** In areas of the country with large snakes, a net trap may be needed in addition to the Pole Guard. Simply wrap and secure "bird netting" around the pole.

This pole guard is designed to wobble slightly when touched by a pole climbing predator. This movement, along with the guard's slipperiness, makes it twice as effective against pole climbing predators. Please wax your guard at least annually to keep it slippery.