

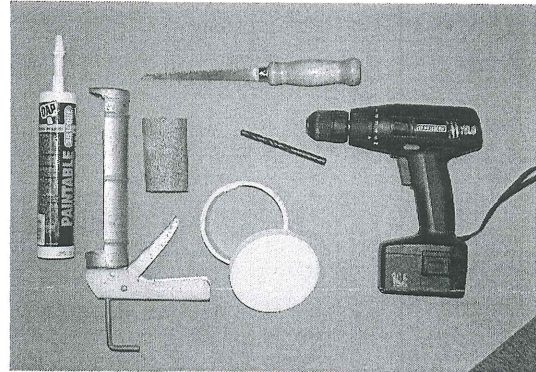
# Natural Gourd Access Caps

Properly prepared gourds make excellent homes for many species of native birds. One drawback to housing birds in natural gourds, however, is that access to the nest is limited to what can be seen through the entrance hole. Installing these access caps on natural gourds allows quick and easy access for monitoring, cleaning, and replacing nests for parasite control.

Before installing the access cap, the gourd should be cured, sanded, and soaked in a copper sulfate bath (1lb. of copper sulfate dissolved in 5 gallons of water) for 10-15 minutes.

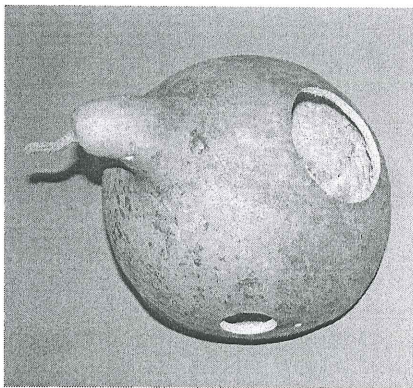
## YOU WILL NEED:

- S&K Access cap
- 1/2" drill bit and drill
- wood saw with a small blade, i.e. keyhole saw.
- small wood rasp, file, or coarse sand paper
- 100% white silicone caulking (DAP or its equivalent)
- caulking gun



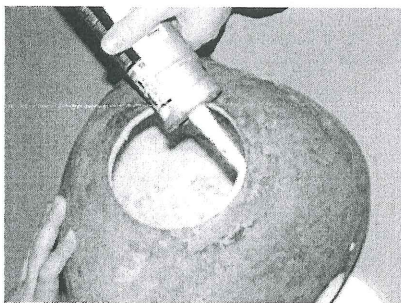
## INSTRUCTIONS FOR ADDING ACCESS CAPS TO GOURDS:

*\*Read all steps thoroughly before beginning.*



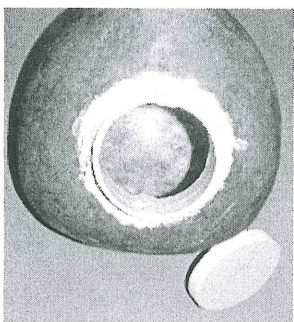
1. First determine where the access port should be located on the gourd. Right-handed people will probably want it on the upper right side of the gourd; left-handers will want it on the upper left. It should be placed slightly above the level of the entrance hole, pointing at an upward angle. Once you select a good position for the access hole, mark the location by tracing the outside of the S&K neck onto the gourd. *Double check that the outline is located where you want it.*

2. Use the drill bit to create a pilot hole just inside of the traced line. This will create a starting point for the saw. Working carefully, saw along the inside of the traced line, circling back to the starting point. By cutting *inside* the traced line, you will ensure that you are not cutting the entrance hole too big from the start. It is always easier to sand or file away to make the entrance bigger than it is to adapt to a too-large hole. Once you have the access hole cut out, file or sand down the rough edges just enough to ensure a proper fit.



3. Using only 100% white silicone caulking (like DAP), apply a 1/2" thick bead onto the gourd along the edge of the access hole. [See photo at left]

4. Insert neck approximately halfway into cut hole. Make sure that the neck isn't inserted so far into the hole that it becomes difficult to screw or unscrew the lid. Apply more caulk along the seam on outside of gourd where the S&K cap and gourd meet, and where there are large gaps. Smooth the caulk with a brush or a wet finger, but do not spread it on too thin. Be sure to keep threads on neck free from caulk, so lid will screw on and off smoothly. Allow 24 hours for caulk to dry; it may take longer in cooler or more humid conditions.



Purple Martin Conservation Association  
301 Peninsula Drive, Suite 6 • Erie, PA 16505  
814-833-7656 (phone) • 814-833-2451 (fax)  
[www.purplemartin.org](http://www.purplemartin.org) • [info@purplemartin.org](mailto:info@purplemartin.org)

NGAC: 4/12/11

©2008 PMCA All rights reserved