



Manufacturing Attractive Bird Products

71024 Co. Rd. 13 Nappanee, IN 46550 • Toll Free (866) 546-0423
(574) 773-4975 • FAX (574) 773-7282

Multipurpose Winch Upgrade

Step 1: Standing about 3' from the pole, lower your housing as if you were doing a nest check

Step 2: If your houses or gourds have nests, it is very important that you mark the location of each house or gourd. The housing must be reattached at the same location or the martin parents will not be able to find the young, causing them to abandon. Remove the gourd arms from the brackets by lifting up on the arms. Leaving the arm attached will help balance the gourd at an upright position. Also remove your martin houses by taking the universal mounting plate off of the hub arm.

Step 3: Remove the aluminum pole off the gourd stake by sliding it upward. An adult of average strength can typically do this alone, to be safe, have another person assist in this procedure. Lay the pole on a 5 gallon pail or similar object as to not bend the top perch rods.

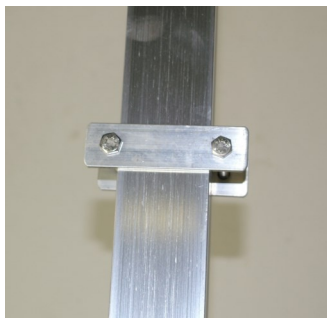
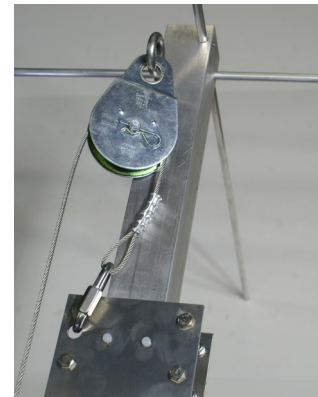
Step 4: Remove the rope winder from the pole.

Step 5: Loosen the quick link and remove the double pulley. The quick link is located on the top left corner of the hub and needs to stay with the hub.

Step 6: Remove the 6" eye bolt with double pulley and rope.

Step 7: The new eye bolt with pulley and cable attached should be inserted into the pole at the same location that the 6" eye bolt with double pulley was removed. Reattach the locknut and tighten with wrench. The split, in the eye of the eyebolt should be turned upward so the pulley will hang freely and the eyebolt will not open with the weight of the hub.

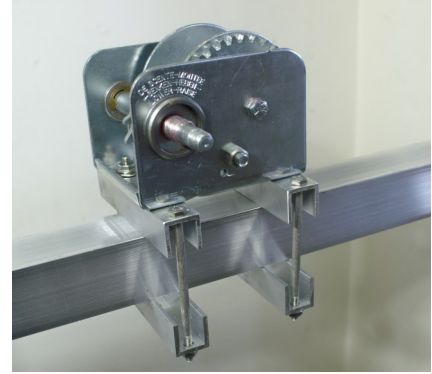
Step 8: Put the cable loop into the quick link and retighten.



Step 9: When raising your housing, some types may actually hit the top perch rods and bend them. To prevent this from happening, attach the two 3-1/2" aluminum plates to the pole using two 1/4" x 2-3/4" bolts with flange nuts. The stop should be mounted above the hub and adjusted according to the height of your martin houses.

Step 10: It is important to mount the winch on the same side of the pole that the cable extends downward. Mount the winch using two aluminum u-channels and 1/4" x 4-1/2" bolts with flange nuts. The winch can be mounted at any desired height though

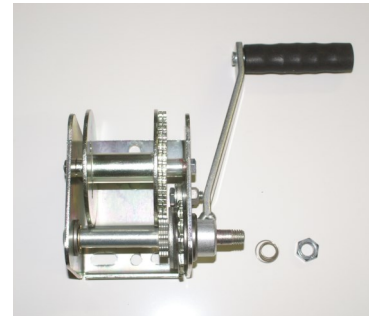
nest checks will be easier if the winch is mounted lower to the ground.



Step 11: Attach the cable guide pulley approximately 10" above the winch using one aluminum u-channel and 1/4 x 4-1/2" bolts and flange nuts.



Step 12: Thread the winch handle onto the winch. Slide the spring onto the winch beside the handle. Secure the spring with the 3/4" wide nut.



Step 13: Your Multipurpose is now ready to be erected. The lower you keep the hub on the pole when erecting, the easier it is to balance. Obtain assistance when erecting as working with objects above your head can cause serious injury. Set the Multipurpose pole and hub vertically over the ground stake and slide the pole down to ground level.

Step 14: Reattach the martin houses and gourd arms. Make sure they are in the same position as what they were when removed. Be sure all bolts are tight and the gourd arms are seated all the way down into the u-shaped slot. The multipurpose is now ready to be raised! When you reach the top of the pole and are against the stop, DO NOT over tighten or damage may occur.