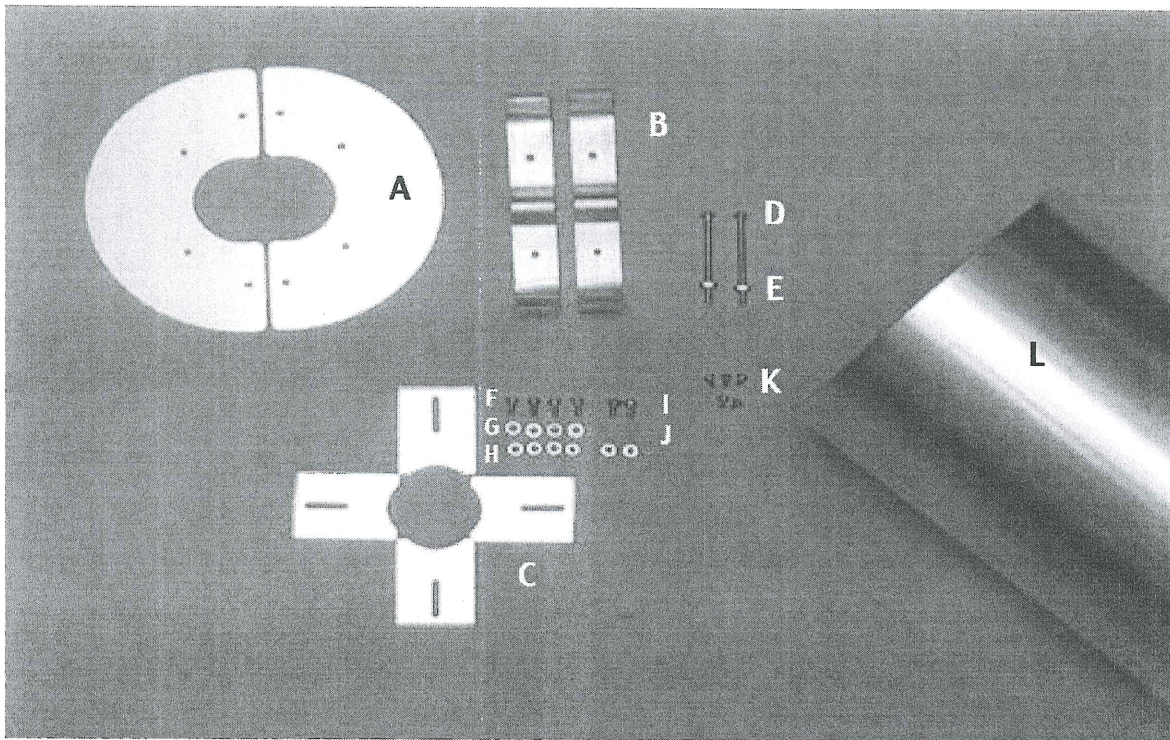


Adjustable Pole Guard Assembly Instructions

Fits any metal pole with an outside diameter between 3/4" and 2-3/8"

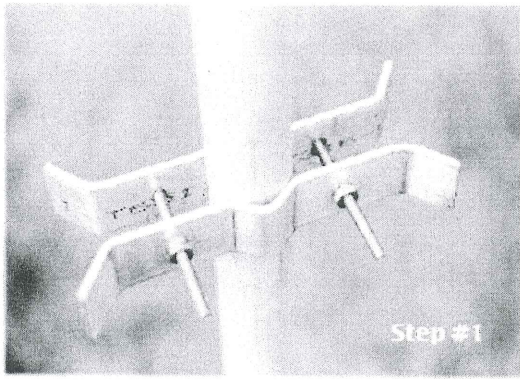


Pole Guard Parts List

Code	Quantity	Part Description
A	2	aluminum top halves
B	2	aluminum pole clamps
C	4	adjustable aluminum plates
D	2	#10 x 2-1/2" round head stainless steel machine screws with
E	2	#10 stainless steel nuts attached
F	4	#8 x 3/8" pan head stainless steel machine screws
G	4	#8 stainless steel flat washers
H	4	#8 stainless steel nuts
I	2	#8 x 3/8" pan head stainless steel machine screws
J	2	#8 stainless steel nuts
K	2	#6 x 1/4" pan head sheet metal screws
L	1	aluminum tube

Please read all instructions completely before assembling!

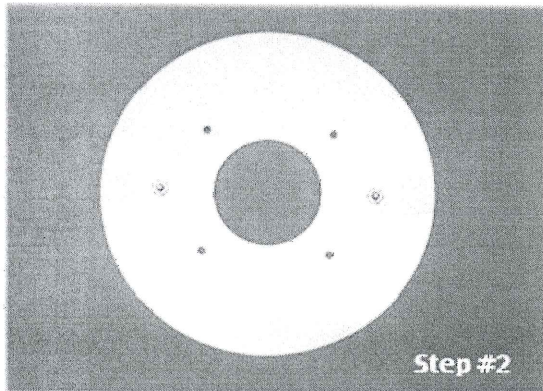
Assembly & Mounting Instructions



To maximize its effectiveness, mount the pole guard as high as possible above the ground, yet low enough that it won't interfere with the lowering of your martin housing for nest checks. In most situations, the top of the guard will be about 4 feet off the ground. Do not let lanyard ropes (such as those on the Trio Grandpa martin house, or those on many gourd rack systems) dangle over the side of this guard — snakes and raccoons can use a rope to climb around guards. Likewise, do not allow tall vegetation to grow up around the guard.

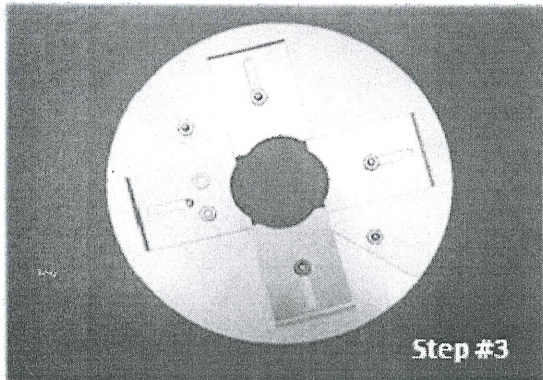
Step 1: Attach the pole clamps

Attach the two pole clamps (B) at your chosen mounting height (usually about 4 feet off ground) using the two #10 x 2-1/2" round head machine screws (D), the two #10 nuts (E). Make sure the mounting clamps are level to the ground and parallel to each other as you tighten them securely.



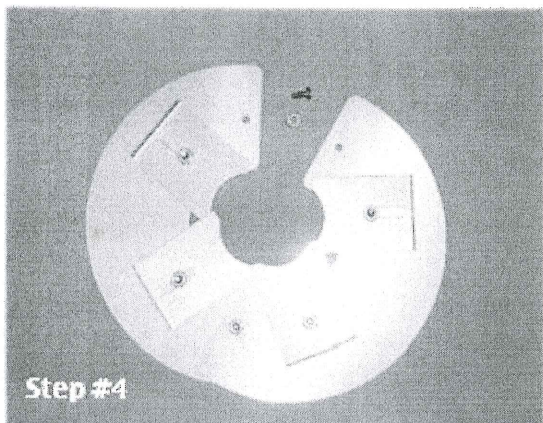
Step 2: Assemble the top plate

Using the two #8 x 3/8" pan head screws (I), assemble the two top halves (A) together forming an overlapping circle. If overlapped correctly, these two top halves will form a circular disk. Snug the screws down, using one #8 nut (J) per screw. Screws should be pointing toward the ground after installation on the pole. Do not tighten.



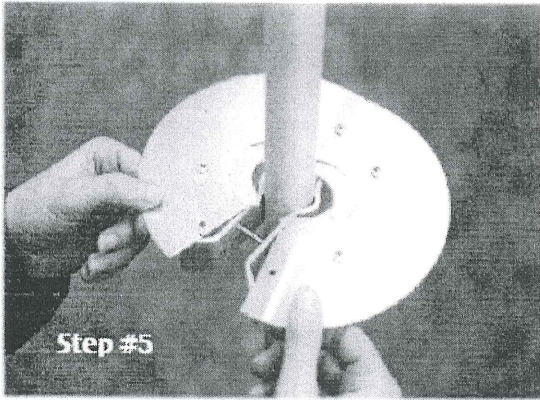
Step 3: Attach the adjustable plates

Attach the four adjustable plates (C) to the underside of the top round disk (A) using the four remaining holes in the disk (A). Use the four #8 x 3/8" Phillips pan head machine screws (F), the four #8 flat washers (G), and four #8 steel nuts (H). Overlap the four plates as shown in the photos (i.e., over, under, over, under, as you move around the plate). In other words, the plates opposite each other should both be over (or under) the two adjacent plates. Do not tighten the plates at this stage. (Note: When mounting guard on a pole with an outer diameter of 2-3/8", you must leave off parts (C), (F), (G), (H) and (I).



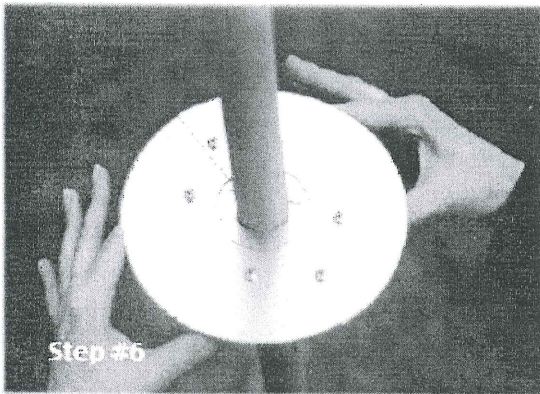
Step 4: Pivot disk open

Now remove one of the 3/8" screws (I) and #8 nuts (J) used in step #2, and pivot the disk open.



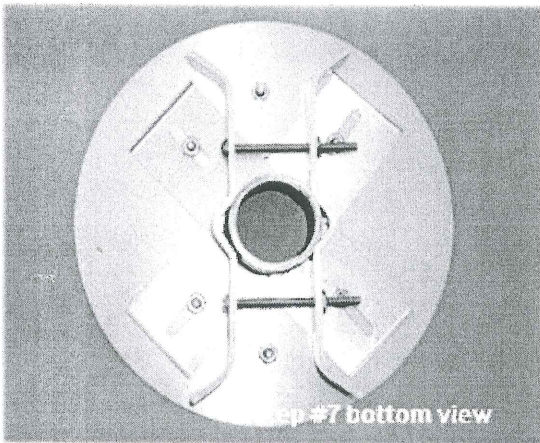
Step 5: Attach disk to pole

Slip open disk around the pole above the pole clamps, and close. The protruding pair of 3/8" screws (I) should be between the two ends of the pole clamps (B) and point towards the ground. Reinstall the screw and nut. Now tighten the nuts on both screws (J).



Step 6: Tighten plate on pole

Center the hole in the circular plate (A) around the pole, adjust the four aluminum plates (C) until they are tight against the pole. The best way to do this is to push in on the tabs of all four plates (C) simultaneously, using your two thumbs and two forefingers, as shown in the photo. Everything should be centered and symmetrical. Tighten the four nuts (G) that secure the four adjustable plates (C).



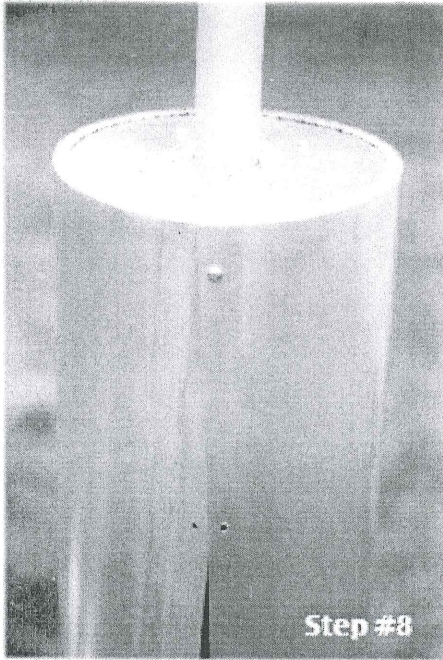
Step 7: Attach the tube

There is a right way and a wrong way to mount the aluminum tube (L) on the hanging bracket disk. **Doing it the wrong way could permanently distort and crease the tube.**

The right way: with the crimped end of the tube up, place it around the pole **BELOW** the hanging bracket by spreading it open **NO MORE THAN THE DIAMETER OF THE POLE!** It should now slide up over the hanging bracket by spreading it open only about an inch or two.

The wrong way: IF YOU ATTEMPT TO SPREAD THE TUBE OPEN the entire amount necessary to fit directly over the hanging bracket, you could bend and permanently distort the tube.





Step 8: Tighten screws on tube

Rest the crimped upper lip of the tube (L) on the top of the circular mounting plate. Note that one long edge of the tube contains two large holes, the other edge two small holes. **THE LARGE HOLES MUST OVERLAP THE SMALL** before receiving the two #6 x 1/4" Phillips pan head sheet metal screws (K), or the screws will strip out the metal. Align the two holes and start the 1/4" screws through the large holes, into the small. **DO NOT OVER TIGHTEN** the screws or the metal may strip. Assembly is now complete.

This pole guard is designed to wobble slightly when touched by a pole-climbing predator. This movement, along with the guard's slipperiness, makes it doubly affective against pole-climbing predators.

Please note: In areas of the country with large snakes, a net trap may be needed in addition to a pole guard! Simply wrap "bird netting" around the pole; the photo depicts this net trap under the rope winder. See *Purple Martin Update 12(4)* for more details.

How to Care for Your Pole Guard

To lengthen the longevity of your pole guard and to maintain its anti-predator slipperiness, wax the outside of the 7-1/2"-diameter x 24"-long aluminum tube with car paste wax, or carnauba wax. Failure to do so may render the aluminum rough and pitted after long-term weathering and/or oxidation has occurred. A rough outer surface to the guard could possibly enable a pole-climbing snake to negotiate its way around the guard. Should the aluminum tube of your guard become rough to the touch after several years of use, gently polish its sides with fine steel wool, then apply another coat of wax.

During the non-martin season, bring your pole guard inside out of the weather, unless you use it as a predator guard on your bluebird house, or as a squirrel baffle on your bird feeder poles.

Photo by Steve Kroenke



Purple Martin Conservation Association • 301 Peninsula Drive, Suite 6 • Erie, PA 16505
(814) 833-7656 (phone) • (814) 833-2451 (fax) • www.purplemartin.org • info@purplemartin.org

GUARDA: 4/10

©2007 PMCA All rights reserved