



Manufacturing Attractive Bird Products

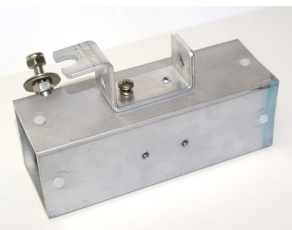
71024 Co. Rd. 13 Nappanee, IN 46550 • Toll Free (866) 546-0423
(574) 773-4975 • FAX (574) 773-7282

First Martin Gourd Rack

SAFETY INSTRUCTIONS: Read and understand all of the instructions and cautions prior to the assembly and installation of the gourd rack. Assemble and install gourd rack only to the following instructions as improper installation could result in damage or serious injury.

LOCATION Your gourd rack should be as far away from trees as possible. An average minimum distance of 40 feet away from trees is required. Martins like wide open flight paths around their housing. Think of your martin housing being an airport and the martin as the airplane. Martins prefer to have two or more runways to land and take off. Also, martin housing should be no closer than 25 feet or no further than 120 feet from human housing. Martins like to be close to people.

STEP 1: Using a post hole digger, dig a hole 24" deep by 9" diameter. Depending on your soil conditions, a larger diameter hole may be needed. Fill the hole with wet premixed cement to ground level. Mark the 1" solid aluminum round 6" in from one end. Place the ground stake into the wet premixed cement to the 6" mark leaving 18" above ground. The 18" above ground will help stabilize your pole. Be sure the ground stake is plumb. The pole will slide over the ground stake later when your finished with assembly.



STEP 2: Place an arm holder over the two threaded holes on one side of the hub, with the notched end of the arm holder towards the end of the hub piece with the assembled bolts and washers. Place a lock washer over the predrilled hole and insert a 3/8" screw and tighten. Repeat with the three remaining arm holders.

STEP 3: Remove the outer lock nut and one washer from the preassembled hex bolt assembly at the corner of hub. Slide the crimped end of rope onto the bolt. Replace the washer and lock nut and tighten securely. The rope should be positioned between the two washers.



STEP 4: Measure and mark the center of each 12" splice supports. Slide the two splice supports into each end of one long pole section to the marked center. Secure each splice support with 1/4" set screw. The set screw should "bite" down on the milled flat spot of the splice supports. Slide the top section (short pole section) and the remaining long pole section onto the splice supports that are protruding out from the pole. Secure the remaining pole sections also with 1/4" set screws.

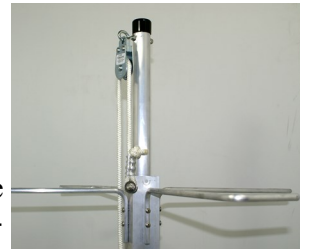
STEP 5: Remove the lock nut from the pulley eyebolt insert eyebolt through the hole located at the top of the pole. Orient the eyebolt that the split is turned upward towards the top and the pulley hangs downward. The split should be turned upward so the eyebolt will not open with the weight of the hub and gourds. Replace the locknut on the eyebolt and tighten with a wrench. Place the black cap over the top of the pole.



STEP 6: Starting at the bottom end of the pole slide the hub with rope end first onto the pole. Feed the rope through the pulley as shown in the photo.



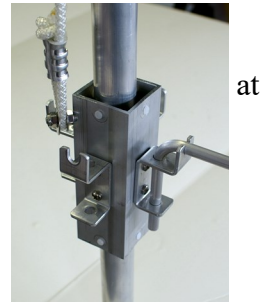
STEP 7: Attach the rope winder to the pole using 1-3/4" bolts and hex nuts. The rope winder should be attached on the same side of pole as the pulley at the top to assure proper alignment for the rope. The rope winder can be placed at any height that is comfortable.



STEP 8: Your gourd rack is now ready to be erected. The lower you keep the hub on the pole when erecting, the easier it is to balance. Obtain assistance when erecting as working with objects above your head can cause serious injury. Set the gourd rack, with pole, vertically over the ground stake and slide the pole down to ground level.

STEP 9: Secure the pole onto the ground stake with a 1/4" set screw.

STEP 10: Attach arms to gourd rack. The end of the arm with the small hole drilled in it is the end that the gourd will attach to; therefore, insert the opposite end into the hub assembly. (See picture right.)



STEP 11: Slide the gourds on the arms and insert one hitch pin per arm to keep the gourd from sliding off. Vertically hung gourds may require their hanging holes to be enlarged with a 3/8" drill bit to fit arms. Horizontally hung gourds will need two hitch pins inserted per arm, one on each side of the gourd.



STEP 12: Raise the gourd rack by standing 3 feet from the pole, clear of any gourds that will be above you, and pull down on the rope to slide the hub upward on the pole. Once the hub is raised, wind the excess rope around the rope winder. The closer the hub is to the pulley and eyebolt, the less rotation the hub will have. Make sure the rope comes down between the arms directly below the eyebolt. Excessive wear will occur if the rope will rub against the gourd arms.



CAUTION: For your safety, stand far enough away from the gourd rack that you are clear of any gourds that are overhead, when raising and lowering the system. Do not let the rope slip in your hands or serious injury may occur. Using non-slip gloves makes raising and lowering both easier and safer.

CARING FOR YOUR GOURD RACK: Oil the pulleys once a year to keep them working smoothly. It is recommended waxing the aluminum pole once a year with car wax. Remove the nest and clean the gourds at the end of each season. It is highly recommended to store the complete system inside for winter storage. Check all the bolts and set screws to make sure they are all tight before putting the system up each spring. Inspect the rope for any signs of wear. If wear should occur, replace immediately with 1/4" polyester rope.