



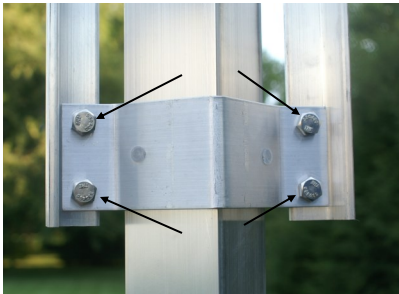
Manufacturing Attractive Bird Products

71024 Co. Rd. 13 Nappanee, IN 46550 • Toll Free (866) 546-0423
(574) 773-4975 • FAX (574) 773-7282

6 up 12 Upgrade

Step 1: Lower your gourd rack to a height that is comfortable for you to work with. Wrap the remaining rope around the rope winder to keep the rack at this height.

Step 2: Remove the gourd arms from the hub by lifting up on the arm. Keeping the gourds attached to the arm helps balance the gourd in a upright position. If the gourds have nests, it is very important to mark the location of each gourd. The gourd must be reattached in the same position. If a gourd with a nest is relocated in a different position, the parents will not be able to find the nest causing it to be abandoned.



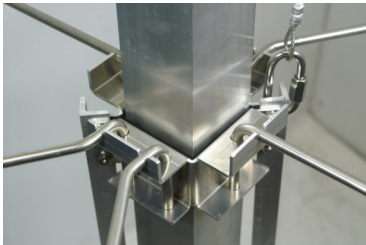
Step 3: Remove the 4 bolts that attach the bottom hub brackets. Keep the nuts and bolts because to reattach the new hub brackets.

Step 4: Attach the new hub brackets reusing the nuts and bolts at the same location.



Step 5: Reattach the gourd arms in the top row.

Step 6: Attach the new gourd arms to the bottom row. The gourd will slide onto the end of the arm with a small hole drilled in it. Insert the opposite end (end with no hole) into the arm bracket. The systems have 3 kinds of arms, straight, right bend and left bend. The straight bends are bundled with yellow rubber bands. The right bends are bundled with red rubber bands. The left bends are bundled with blue rubber bands. **LOOKING AT THE FACE OF THE HUB**, the straight arms (yellow rubber bands) will go into the bracket side with single hole. The right bend (red rubber band) will go into the left hole on bracket side with two holes. The left hand bend (blue rubber band) will go into the right hole on bracket side with two holes. Make sure the gourd arms are pushed all the way down into the u-shaped slot.



Step 7: Vertically hung gourds may require their hanging holes to be enlarged to 3/8". Slide the gourd onto the arm and insert a hitch pin into the small hole, at the end of the arm, to keep the gourd from sliding off. Horizontal gourds require a hitch pin at each end of the gourd. Your upgrade is now complete and ready to raise.

