

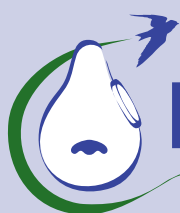


Martin Market Place[®] Supply Catalog

Vol. 23



Join the PMCA today for member discounts!
www.purplemartin.org



Purple Martin
Conservation Association[®]



Nest Check Bundle (LMPPROG)

Includes Purple Martin Prognosticator and Laminated Martin Photos (details below)

\$18.95 Member / \$19.95 Non-member

Purple Martin Prognosticator (PROG)

Accurately monitor your colony!

Ingenious 8" wheel provides first egg and hatch date, the age of young, and earliest fledge date. Made of weather resistant plastic.

\$10.40 Member / \$10.95 Non-member

PROG



Laminated Martin Photos (LMP)

Determine sex and age of your martins!

Laminated color photos follow martin nestling from hatching day through adulthood. Helpful for Scout-Arrival Study and Project MartinWatch participants.

\$10.40 Member / \$10.95 Non-member



LMP

Purple Martin Poster (PMP)

All you ever wanted to know about martins in an attractive full-color poster! Perfect for the classroom or public site. This 19" x 25" poster is waterproof and ready to be displayed with martin history and information about migration, nesting, diet, and housing.

\$9.45 Member / \$9.95 Non-member



PMP

Stokes Purple Martin (PMBOOK)

Great for all landlords. Covers attracting martins, the life of a Purple Martin, colony management, western Purple Martins, history, and more. Includes designs for predator guards and how to deal with nest-site competitors. 96 pages.

\$11.35 Member / \$11.95 Non-member

PMBOOK



Enjoying Purple Martins More (EPMM)

A must for every martin fan. 32 pages. Updated information!

\$4.70 Member / \$4.95 Non-member

EPMM



Martin Market Place® content ©PMCA

The Purple Martin Conservation Association® is a 510(c)(3) tax-exempt charity headquartered in PA. A copy of the official registration and financial information may be obtained from the PA Dept of State Bureau of Charitable Organizations by calling 777.783.6014 or write to them at 209 N. Office Building, 401 N. St. Harrisburg, PA 17120. Registration does not imply endorsement.

Martin cover photo courtesy of Gerald P. Giannamore

The Martin Market Place® is published by the Purple Martin Conservation Association (PMCA), 301 Peninsula Dr., Suite 6, Erie, PA 16505 and is provided free of charge. Jan-Dec 2017 Volume 23.



Purple Martin Attraction Bundle (ATTRACT)

All the best attraction tools in one cost-saving bundle

Includes: Dawnsong CD, Daytime Chatter CD, and two Purple Martin Decoys

\$37.00 Member / \$38.95 Non-Member



ATTRACT

Songbird Magnet (SBM)

Entice Purple Martins to your yard.

- Easy to use
- Water and weather resistant
- Comes on automatically at dawn
- Comes with 50' cord

\$52.20 Member / \$54.95 Non-Member



SBM

PMCA Dawnsong CD (DSCD)

Dawnsong is the song the adult male Purple Martin sings before dawn specifically to attract other martins to the site.

- 74 minutes
- 16-page instructional booklet included
- High quality recording by Cornell Lab of Ornithology

\$15.15 Member / \$15.95 Non-member



DSCD

Purple Martin Decoys (DECOY)

Attract martins to your site

Decoys help convince martins to colonize your site.

- Life-sized adult male decoys
- Highly detailed plastic, 7" in length
- Ready to mount on a gourd or house

Single \$5.95 Member / \$6.25 Non-member

2-Pack \$10.90 Member / \$11.45 Non-member

4-Pack \$19.75 Member / \$20.80 Non-member

DECOY



PMCA Daytime Chatter CD (CHAT)

Hear the beautiful chirps and gurgles of a thriving colony site. Use along with the Dawnsong CD and Decoys to attract martins.

- Helps martins notice your site
- 74 minutes, 16-page instructional booklet included
- High quality recording by Cornell Lab of Ornithology

\$15.15 Member / \$15.95 Non-member



CHAT



Our **BEST** Selling Gourd!

FREE inside and outside porch included with every gourd. \$4 value!



**PMCA Excluder®
Gourd with
Excluder® II
Opening (EG)**

PMCA Excluder® Gourds (EG)

Molded from a natural gourd, offers a large nesting cavity.

Portion of every sale supports the research and education efforts of the Purple Martin Conservation Association.

- Large, 10½" high-density polyethylene plastic
- Seamless, one-piece, opaque, and UV protected
- Screw-on access cap for easier nest checks, nest replacements, and clean-outs
- Ribbed canopy helps keep rain out and provides perching area
- Free heavy-duty grooved plastic inside and outside porches
- Only gourd on the market with the Excluder® and Modified Excluder® entrance—most effective at keeping European Starlings out
- Drilled with 5/16" hanging holes (need enlarged to 3/8" for use on gourd racks)
- Convenient fill line on outside of the gourd to help with adding nesting material

	Member	Non-member
2-pack	\$43.65	\$45.95
4-pack	\$86.40	\$90.95
6-pack	\$123.45	\$129.95
8-pack	\$151.95	\$159.95
12-pack	\$227.00	\$238.95
18-pack	\$333.40	\$350.95
24-pack	\$415.10	\$436.95

*other quantities available online

Entrance Options:



Excluder® II (E)



Modified (M)



Crescent (C)



Round (R)

Use with vertical arms.



BEST SELLER!



HDCAP

PMCA Heavy-Duty Replacement Caps (HDCAP)

Heavy polyethylene with UV treatment. No need for liners. Caps are ribbed for easy removal. Fits PMCA Excluder®, SuperGourd, and Troyer Gourds.

\$2.60 Member / \$2.75 Non-member



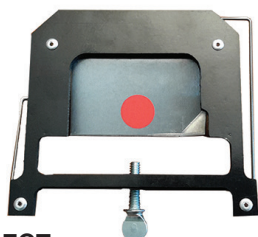
EGOG

PMCA Excluder® Owl Guards (EGOG)

Protect martins from aerial attack.

Easily installed, stainless steel screws provided. Only works with PMCA Excluder® Gourd (sold separately).

\$6.60 Member / \$6.95 Non-member



EGT

PMCA Excluder® Gourd Trap (EGT)

Trap starlings and house sparrows

Inserts into PMCA Excluder® Gourds without removing inside porch. Easy to use shutter mechanism with closed door indicator.

\$19.90 Member / \$20.95 Non-member



MGIT

Martin Gourd Insert Trap for PMCA Excluder® and SuperGourds* (MGIT)

Durable metal trap with visible shutter. Easy snap in/out installation. No tools required. Fully assembled. Does not work on other plastic or natural gourd. Must remove interior porch for use. *SuperGourds sold on page 7.

\$14.95 Member / \$15.75 Non-member



GV

Gourd Vents (GV)

Use gourd vents to keep your martins cool. Add ventilation to gourds or houses. Comes with elbow vent and outer plug to close vent during cool temperatures.

\$2.80 Member / \$2.95 Non-member

Predrilled HDCAP plus vent

\$4.20 Member / \$4.40 Non-member



NEW!



Troyer Gourds (TG)

Classic gourd shape, along with added predator protection from tunnel.

- One-piece, 13" deep high-density polyethylene plastic
- Access port with heavy-duty twist-off cap
- Internal traction pad for easy exit/entrance
- 4 drillable locations for ventilation
- Built-in wing entrapment protectors on Conley 2 entrances
- 3/8" hanging hole drilled front to back

Choose from 2 entrances: round entrances (R) or starling-resistant Conley 2 entrances (CON).



Conley (CON)



Round (R)

Use with horizontal arms.

	Member	Non-member
2-pack	\$44.60	\$46.95
4-pack	\$87.35	\$91.95
6-pack	\$125.35	\$131.95
8-pack	\$147.20	\$154.95
12-pack	\$218.45	\$229.95
18-pack	\$321.05	\$337.95
24-pack	\$398.95	\$419.95

*other quantities available online



TG

Troyer Gourd with
Conley 2 Entrance

Troyer Horizontal Gourds (TH)

One-piece 9"x14" gourd with heavy duty cap for access port .

- Molded ribs and textured upper-neck allow martins to perch
- Tunnel offers built-in owl/hawk protection
- Unique shape with a large nesting cavity
- Seamless gourd has four drain holes
- Hanging tube on top for use with horizontal arms



TH

Troyer Horizontal
Gourd with Conley 2
Entrance

	Member	Non-member
2-pack	\$49.35	\$51.95
4-pack	\$95.90	\$100.95
6-pack	\$138.65	\$145.95
8-pack	\$164.30	\$172.95
12-pack	\$244.10	\$256.95
18-pack	\$360.00	\$378.95
24-pack	\$450.25	\$473.95

*other quantities available online

Choose from 2 entrances: round entrances (R) or starling-resistant Conley 2 entrances (CON).



Conley (CON)



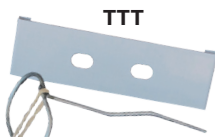
Round (R)

Use with horizontal arms.

Troyer Tunnel Trap (TTT)

Easy-to-use trap for Troyer Tunnels helps control House Sparrows and starlings. Aluminum shutter and trip wire. Installs in seconds. Works with Troyer Tunnels (not included).

\$9.45 Member / \$9.95 Non-member



TTT

IMPROVED!



SG

Crescent Entrance

SuperGourds (SG)

All the advantages of a natural gourd, plus the added benefits of low maintenance.

- One-piece, 10" in diameter, 7 drain holes
- High-density polyethylene plastic with ultraviolet inhibitors
- Access port with a watertight heavy-duty screw-on cap
- Ribbed rain canopy doubles as a perching platform
- Drilled with $\frac{7}{32}$ " hanging holes (need enlarged to $\frac{3}{8}$ " for use on gourd racks)

	Member	Non-member
2-pack	\$47.45	\$49.95
4-pack	\$92.10	\$96.95
6-pack	\$132.95	\$139.95
8-pack	\$156.70	\$164.95
12-pack	\$232.70	\$244.95
18-pack	\$341.95	\$359.95
24-pack	\$427.45	\$449.95

Choose from starling-resistant Crescent entrance (C) or Round (R).



Crescent (C)



Round (R)

Use with vertical arms.

*other quantities available online

SGP



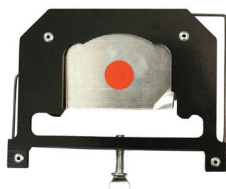
SuperGourd Porches (SGP)

Add perching area to crescent SuperGourds with inside and outside porches. Ribbed porches bolt securely on SuperGourds allowing martins easier entry through starling-resistant holes. Pre drilled.

Only for crescent entrances.

(Set of 2) \$4.75 Member / \$5.00 Non-member

SGT



SuperGourd Trap (SGT)

Inserts into Supergourd without removing inside porch. Easy to use mechanism with closed door indicator.

\$19.90 Member / \$20.95 Non-member

NEW!



SGXC

Adapter Plate with Troyer Tunnel (SGXC)

Convert Round SuperGourds to Starling-Resistant! Includes adapter plate, Troyer Tunnel with Conley 2 entrance and stainless mounting hardware. (Need to enlarge original entrance.)

	Member	Non-member
4-pack	\$38.90	\$40.95
8-pack	\$72.15	\$75.95
12-pack	\$105.40	\$110.95



Natural Gourd (RGCP)

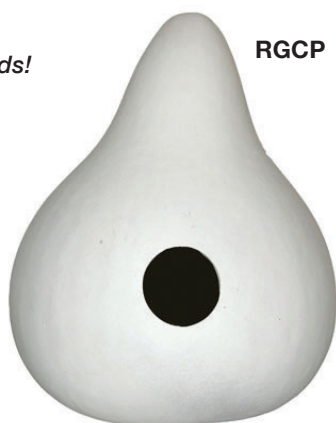
Drilled, cleaned, and painted natural gourds!

- Predrilled round entrance
- Drainage holes
- Hanging holes added
- Cleaned and painted outer shell
- Outer diameter approximately 9"–11"

Cannot Ship to Canada

	Member	Non-member
2-pack	\$37.95	\$39.95
4-pack	\$73.10	\$76.95
6-pack	\$104.45	\$109.95
8-pack	\$139.60	\$146.95
12-pack	\$193.75	\$203.95

*More natural gourd choices available online



*Natural gourds vary
in size and shape*

Natural Gourd Access Ports (NGAP)

A great option for adding waterproof access to natural gourds!

Threaded entrance ports made of sturdy plastic, includes caps that unscrew for easy access. Neck is 4" in diameter. Caps include liners. Sold singly.

\$4.30 Member / \$4.50 Non-member



Gourd Canopies (GC)

Give martins protection from rain and added perching space.

Aluminum roof canopies attach to any gourd, natural or plastic with 100% silicone caulking (not included). Canopies double as perching platforms. Mounting instructions included.

\$2.35 Member / \$2.45 Non-member



Troyer Tunnel (TT)/Troyer Tunnel for Natural Gourds (TTN)

Easily convert Troyer or Natural Gourd into a Conley 2 entrance

Tunnel fits over neck of Troyer Gourds. Plastic pop-screws (included) secure tunnel. Comes with molded-in porch. Available in starling-resistant Conley 2 entrances, with built-in wing entrapment protectors, or round entrances (R). A 3 7/8" hole must be cut into gourd. Troyer Tunnel for natural gourds (TTN) has an added traction step-up.

\$9.45 Member / \$9.95 Non-member



Troyer Tunnel Door Stop (TTSTOP)

Plastic door stops block Troyer Tunnels before martins arrive. **(Not shown)**

\$1.85 Member / \$1.95 Non-member

S&K gourds available online.

PMCA Heavy-Duty Replacement Caps (HDCAP)

Heavy polyethylene with UV treatment. No need for liners. Caps are ribbed for easy removal. Fits PMCA Excluder®, SuperGourd, and Troyer Gourds.

\$2.60 Member / \$2.75 Non-member

BEST SELLER!



HDCAP

Replacement Caps (CAP)

Replacement screw-on caps for SuperGourds, PMCA Excluder®, and Troyer gourds. Black Cap Liners (not included) are recommended.

Will not fit Natural Gourd Access Ports.

\$1.85 Member / \$1.95 Non-member



CAP

Black Cap Liners (BCL)

Replace gourd cap liners and give martins a dark cavity. Made from insulation material Depron, creates a tight seal. Fit in PMCA Excluder®, SuperGourds, and Troyer gourds.

\$1.65 Member / \$1.75 Non-member



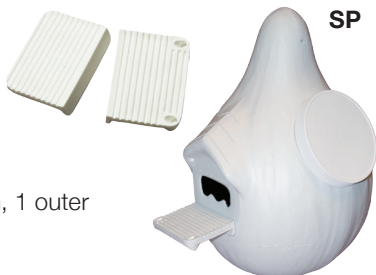
BCL

PMCA Snyder Porches (SP)

Same excellent porches used on PMCA Excluder® gourds—works on most plastic and natural gourds. Grooved, measure 4" x 3", made of durable heavy-duty plastic. Sold in sets of 2, 1 inner porch, 1 outer porch; hardware included.

(Does not work on Natureline.)

\$3.75 Member / \$3.95 Non-member



SP

Porches for Plastic Gourds (GP)

One-piece aluminum porch clips over crescent entrances.

Porch is 2¾" long x 2¾" wide, inside and out (total length 5¾"). Secure with pop rivets or nuts and bolts (not included). Works on crescent SuperGourds or PMCA Excluder® gourds. **Not for round entrances.**

\$2.80 Member / \$2.95 Non-member

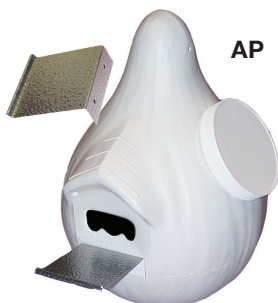


GP

Aluminum Porches (AP)

Give your martins perching area and easier access to starling-resistant entrances. Textured aluminum with rolled safety edge, 3½" x 3½". Mount inside or outside with screws (not provided) on most plastic or natural gourds. Can also be mounted on wooden or metal houses. Sold singly.

\$2.80 Member / \$2.95 Non-member



AP



Starter Bundles Sunset House Bundle



NEW!



PSSB

PMCA Sunset House
Starter Bundle



PMCA Sunset House Starter Bundle (PSSB)

Buy our exclusive housing bundle and attract martins to your yard in this classy home built to last!

Want a good looking house in your yard that will endure for years to come? Invest in our affordable PMCA Martin House bundle. Contains everything you need to get started with martins. Included in this complete setup is the durable aluminum house, plus:

- Eight-pound house comes completely assembled
- Six ventilated compartments
- Each compartment 11" wide by 5 7/8" deep by 5 1/2" tall and has its own porch and railing
- 2" square aluminum pole plus ground stake
- Rope and pulleys for easy raising and lowering and top perch with weather guard to protect the pulley system
- Option of round or crescent entrance holes offset on every floor
- Doors open easily for nest checks and changes
- Attic is ventilated for the birds' protection
- Wire mesh subfloors sold separately online
- The house measures 11" wide by 22" deep by 21" tall at the peak
- Predator guard (GUARDC)
- Attraction tools; Dawn Song CD and Decoy
- *Enjoying Purple Martins More* booklet

\$399.90 Member / \$420.95 Non-member

Gourd Rack Arms—Vertical or Horizontal?

Confused about which gourd arms to choose? For gourds that have the hanging holes drilled from left to right like the Excluder® Gourds and SuperGourds, choose vertical arms; for gourds where the hanging hole runs front to back like the Troyer Gourds, choose horizontal.



GRSBEG



BEST SELLER!

PMCA Gourd Rack Starter Bundle (GRSB)

All you need to add are Purple Martins! Now with taller pole and improved pulley system!

This high-quality Gourd Rack Starter Bundle is PMCA approved for both wanna-be landlords trying for their first pair of Purple Martins and established landlords looking to expand their sites. We created this all-in-one Starter Bundle to supply everything you need in an easy-to-order package with built-in savings too. Includes:

- 6-unit Deluxe Gourd Rack with 14' tall x 2" square aluminum pole, ground stake, rope and 4-part pulley system, top perch and gourd arms
- Either 6 PMCA Excluder® Gourds (GRSBEG—shown above) or Troyer Gourds (GRSB), with your choice of entrance (below)
- Predator guard (GUARDC)
- Attraction tools; Dawn song CD and Decoy
- *Enjoying Purple Martins More* booklet

\$398.95 Member / \$419.95 Non-member

Troyer Entrance Options



Conley (CON)



Round (R)

PMCA Excluder® Entrance Options



Excluder® II (E)



Modified (M)



Crescent (C)



Round (R)



PMCA Gourd Rack Starter Bundle Upgrade (GRSBUP)

Want to upgrade your Starter Bundle?

Expand from starter gourd rack to 12 gourds.

- 6 PMCA Excluder® or Troyer Gourds with your choice of entrance
- Second level of gourd hanging arms

For starter bundles purchased before 2016, please see online.

\$156.70 Member / \$164.95 Non-member



Deluxe Gourd Rack Bundles

Everything you need for a 12-unit gourd rack at an amazing price!

- 2" square aluminum pole
- Ground stake
- Polyester rope and pulley, rope cleat, corrosion-resistant hardware
- 3/8" arms, assembled hub, pole cap and cotter pins
- Top perch rods
- Predator guard—Quick Release (QRG2) or Standard (GUARDC)
- **INCLUDES 12 PMCA EXCLUDER GOURDS**



Gold Series (GSGRB)

includes stainless steel arms and Quick Release Pole Guard

QRG2

\$569.95 Member / \$599.95 Non-member



Silver Series (SSGRB)

includes aluminum arms and Guard C (not quick release)

GUARDC

\$498.70 Member / \$524.95 Non-member

PMCA Excluder® Entrance Options



Excluder® II (E)



Modified (M)



Crescent (C)



Round (R)

First Martin 4-Unit Gourd Rack Bundle (FMGRB)

Affordable and functional, great for new sites!

- 12' aluminum pole, 1" diameter, with ground stake
- 4 gourd hanging arms
- Rope & pulley system
- Installed height is 12'-2"
- Comes with 4 Troyer Gourds or PMCA Excluder® Gourds

\$229.85 Member / \$241.95 Non-member

\$134.85 Member / \$141.95 Non-member (FMGR-without gourds)

FMGRB



Troyer Entrance Options



Conley (CON)



Round (R)

PMCA Excluder® Entrance Options



Excluder® II (E)



Modified (M)



Crescent (C)



Round (R)



DGRG6 (6 Unit)



DGRG12 (12 Unit)



PMCA Deluxe Gourd Racks (DGR)

BEST SELLER!

Raising and lowering this gourd rack is easy, thanks to the four-part pulley system and nylon glide buttons.

- 2" square aluminum pole with ground stake, installed height 14'
- Includes polyester rope, rope cleat, and corrosion-resistant hardware
- $\frac{3}{8}$ " arms, assembled hub and pole cap and cotter pins
- Top perch rods
- Holds natural or plastic gourds
- Choose 6, 12, 18, or 24-unit
- Owl Guards (GROG) and predator guard (QRG2 or GUARDC) recommended, not included (sold separately, page 15)
- Vertical (V) or horizontal (H) gourd arms

GOLD SERIES—Stainless Steel Arms	Member	Non-member
6-unit (DGRG6)	\$291.60	\$306.95
12-unit (DGRG12)	\$320.10	\$336.95
18-unit (DGRG18)	\$367.60	\$386.95
24-unit (DGRG24)	\$419.85	\$441.95
SILVER SERIES—Aluminum Arms	Member	Non-member
6-unit (DGRS6)	\$259.30	\$272.95
12-unit (DGRS12)	\$287.80	\$302.95
18-unit (DGRS18)	\$349.55	\$367.95
24-unit (DGRS24)	\$395.15	\$415.95

DGR Gourd Rack Add-Ons

Save by buying add-ons with your gourd rack

3" pole add on (DGR3P)

Get a stonger, taller pole with our 16' 3"-wide option

\$106.35 Member / \$111.95 Non-member

2" Pole Winch Add-on (DGRWA)

Add a winch and cable, plus 2' to DGR 6, 12, 18 or 24.

- 2' extension amd mounting brackets
- Large aluminum steel pulley
- Heavy duty brake winch

\$133.90 Member / \$140.95 Non-member

3" Pole and Winch Add-on (DGR3PWA)

Add a 3" pole and a brake winch to your DGR.

\$212.70 Member / \$223.90 Non-member

2' pole extension (DGREXT)

Increase pole height by 2'. For 2" pole. (Do not exceed 16' in height)

\$50.30 Member / \$52.95 Non-member



DGR3ULT

Ultimate Gourd Rack (DGR3ULT)

The BEST gourd rack money can buy!

Top-of-the-line. 24-unit Gold Series Deluxe Gourd Rack

- Stainless steel arms
- 3" square aluminum pole with ground stake
- 16' installed height
- Brake winch and cable system
- Top perch
- Vertical (V) or horizontal (H) gourd arms

Gourds not included.

\$550.00 Member

\$578.95 Non-member

Fountain of Success Gourd Rack (FSGR)

Eye-catching, elegant gourd rack adds beauty to your yard!

12 removable stainless steel arms create a flow to hang vertical gourds (PMCA Excluder® Gourds, SuperGourds) or horizontal gourds (Troyer Gourds).

Gourd Rack includes:

- 2" square aluminum pole with ground stake, 14' installed height
- 4-part pulley system
- Top perches are included
- Vertical (V) or horizontal (H) gourd arms

Gourds not included.

\$351.45 Member / \$369.95 Non-member



Mix'n Match Gourd Rack (MNMGR)

Hang your favorite gourds—PMCA Excluder® Gourds, SuperGourds, Troyer Gourds, S&K, Heath, Natureline, or natural gourds. No need to decide between Vertical or Horizontal arms—arms will work with any gourd!

- Holds up to 12 gourds
- 2" square aluminum pole with a ground stake, 14' in height
- 4-part pulley system with rope
- Top perches

Gourds not included.

\$261.20 Member / \$274.95 Non-member





Quick Release Pole Guards (QRG)

Recommended for easier nest checks, pole guard can be removed in seconds!

Finally, an ingenious design solves the problem of using a pole guard without interfering with lowering martin housing!

Top of guard should be 4' off of the ground.

- Pre-drilled, vinyl-edged rope/cable hole
- Aluminum, 8" diameter, 24" long
- Piano hinge and latch system
- Installs and removes quickly while housing is installed
- **See-through tops to confuse predators**



QRG

Pole Guards (GUARD)

Protect birds from raccoons and snakes with economical PMCA-designed pole guard. Installs easily, no need to remove housing from pole.

- 24" long, 8" diameter
- Aluminum baffle suspends from a bracket and top plate
- Smooth surface and wobbling motion keeps climbing predators out of housing
- Rustproof stainless steel hardware
- **See-through tops to confuse predators**



GUARD

For 2" Square Poles (including Deluxe Gourd Racks with 2" pole), Fountain, Mix'n Match, Trendsetter Gourd Racks, Multipurpose Pole and Lonestar Systems, Expandable.

Quick Release Guard (QRG2)	\$64.55 Member / \$67.95 Non-member
Square Pole Guard (GUARDC)	\$44.60 Member / \$46.95 Non-member

For 3" Square Poles Deluxe gourd rack and multipurpose with 3" pole, and T-14 metal pole.

Quick Release Guard (QRG3)	\$64.55 Member / \$67.95 Non-member
-----------------------------------	--

For Round Poles Fits any round metal pole with a diameter 3/4" to 2 3/8"

Quick Release Guard (QRGA)	\$68.35 Member / \$71.95 Non-member
Adjustable Pole Guard (GUARDA)	\$47.45 Member / \$49.95 Non-member

Gourd Rack Owl Guards (GROG)

Effective means of preventing raids by aerial predators (hawks, owls and crows). Curved aluminum rods attach easily to metal arms and prevent owls from clinging to gourd's entrance. Guards held in place with aluminum clips fastened by 2 stainless steel nuts and bolts. Works on the Deluxe, Expandable and Trendsetter Gourd Racks.

Works only with vertical arms.

GROG



	Member	Non-member
Set of 6 (GROG6)	\$52.20	\$54.95
Set of 12 (GROG12)	\$91.15	\$95.95
Set of 18 (GROG18)	\$124.40	\$130.95
Set of 24 (GROG24)	\$157.65	\$165.95



These traps work best fall through early spring, when food is scarce.

PMCA Repeating Bait Trap (RBT)

- Self-resetting to capture multiple House Sparrows and European Starlings
- Place on ground or platform, size approx. 9" x 14" x 11"
- Galvanized steel trap includes slide-out aluminum bait tray, adjustable counterweight on pivoting trap chamber, access door for removing trapped birds, outer porch and carrying handle
- When supplied with food and water, trapped birds serve as decoys to attract more target birds
- Fully assembled

\$72.15 Member / \$75.95 Non-member

RBT



All traps require careful monitoring to avoid harming native birds, including Purple Martins, that might accidentally be captured.

Songbird Essentials Wire Sparrow Trap (SEST1)

- Two trapping chambers, each can catch one sparrow before reset
- Use white bread or sparrow nest material as bait. Keep House Sparrows in center compartment with food and water as decoys
- Measures approx. 6½" x 18" x 10¼"
- Fully assembled, with quick-release mounting bracket and two bait dishes

\$59.80 Member / \$62.95 Non-member

SEST1



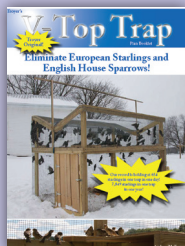
DO IT YOURSELF!

V-Top Trap Plans (VTTP)

Walk-in trap, never needs to be reset. Target birds enter through V-shaped top entrance, and can't escape. Trapped birds act as decoys, luring more birds into trap. (Non-target birds can be released, unharmed.) 5' x 5' x 8' frame breaks down for storage, sets up easily. 8–10 hour assembly.

\$12.85 Member / \$13.50 Non-member

VTTP

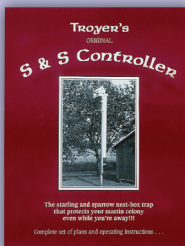


S & S Controller Plans (SSPLANS)

Repeating nest-box trap mimics a martin house and automatically resets itself after capture. 17-page booklet features 32 photos, 12 illustrations, and complete plans for building the trap. Approximately 10 hours to build.

\$12.85 Member / \$13.50 Non-member

SSPLANS





These traps work best during the nesting season.

PMCA Starling/House Sparrow Nest-box Trap (STHS)

Works great during the nesting season to trap both starlings and sparrows!

- PMCA-designed Starling & House Sparrow nest-box trap
- All-metal, squirrel-proof trap mechanism
- Constructed of durable cedar
- Captures European Starlings and House Sparrows alive. Must reset after each capture

\$ 68.35 Member / \$71.95 Non-member



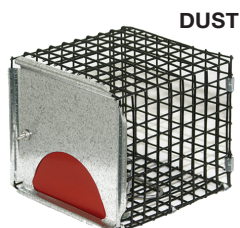
PMCA Universal Sparrow Traps (DUST/UST)

Both traps fit inside spaces that accommodate their 4¼" x 4¾" x 5" dimensions with the entrance holes aligned. Birds are captured alive and unharmed.

Deluxe Universal Sparrow Trap (DUST)

Works in starling-resistant entrances

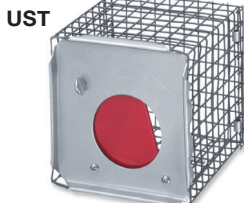
\$24.65 Member / \$25.95 Non-member



Universal Sparrow Trap (UST)

Works with round entrances

\$23.70 Member / \$24.95 Non-member

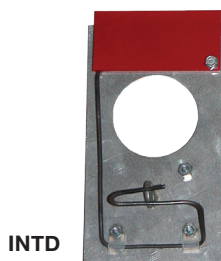


Bluebird Deluxe Insert Trap (INTD)

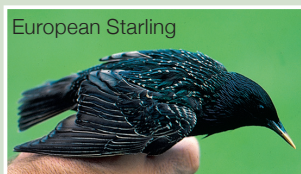
Larger entrance hole and thin design makes trap hidden to House Sparrows.

All-metal insert trap thumb-screws into inside of any **wooden bluebird house** that will accommodate trap's 3¼" x 6¾" dimensions with entrance holes and trap hole aligned. Shutter is brightly colored on both sides. Thumb screw included.

\$13.25 Member / \$13.95 Non-member



Both the House Sparrow and European Starling are non-native species and should never be permitted to nest in martin housing. They will take over martin compartments, destroy eggs, and kill nestlings. They can also prevent martins from nesting and often injure or kill adults. Successful martin landlords do not tolerate these non-native competitors. Starlings and House Sparrows are not protected and may be legally controlled by trapping/shooting. Baited traps work best when their normal food is scarce but can be used all year. Try baiting traps with nesting material—small scraps of bright yarn work well for House Sparrows during nesting season.





Bed and Breakfast can be loaded with eggshells, oyster shells, mealworms, crickets, pine straw, twigs, hay, and mud.

PMCA Bed and Breakfast (BB08)

Spoil your martins with food and bedding in one safe, elevated location!

Whether you are offering eggshells, mealworms, nest material or mud, martins will appreciate this unique station.

- Made of rust proof aluminum
- Rope and pulley system
- Sturdy Schedule 40 aluminum pole that installs over aluminum ground stake (included)
- Four 9" x 9" x 1¼" trays fixed to four removable arms
- Installed height is 10'
- Stainless steel hardware included

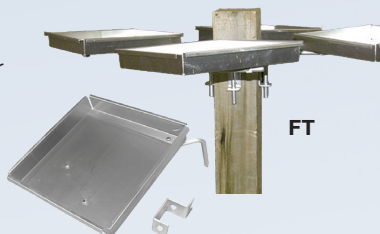


\$158.60 Member / \$166.95 Non-member

Feeding Tray (FT)

Versatile aluminum feeding tray mounts practically anywhere. Attach to sides of wooden or aluminum house or slide mounting arm onto PMCA Deluxe Gourd Rack in place of a gourd.

- Build a feeding station with four trays on a 4" x 4" post
- Tray is 9" x 9" x 1¼"
- Mounting bracket included
- Sold singly
- **Post not included**



\$25.60 Member / \$26.95 Non-member

Quad Feeder (QF)

Looking for an economical feeding station?

This 6' station allows you to enjoy martins at eye level. Four 9" x 9" removable trays are attached to a 2" PVC pole (included) to make refilling and cleaning a breeze.



\$108.25 Member / \$113.95 Non-member

Martin Bedding—Pine Straw (PS)

Give your martins a head-start on nest-building. Pine straw provides insulation, drains well, and stays dry. Add to compartments before martins arrive. Replace parasite-infested nests during the season to increase nesting success. High-grade, non-treated dried pine straw comes in three sizes.

**Cannot ship to Canada.*

6 gourds/12 rooms (PS6G)

\$15.15 Member / \$15.95 Non-member

12 gourds/24 rooms (PS12G)

\$18.95 Member / \$19.95 Non-member

Bale (8 cubic ft) — fills 75 gourds/150 Rooms (PSBALE)

\$59.80 Member / \$62.95 Non-member



PS

Dried Mealworms (DMW)

Be ready for bad weather!

Great for supplemental feeding, naturally dried mealworms are preservative and additive free. High source of protein for martins, bluebirds and any insect-eating bird. Mealworms have a long shelf life and do not need to be refrigerated.

3.5 oz. (DWM3.5) \$6.60 Member / \$6.95 Non-member

10 oz. (DMW10) \$18.00 Member / \$18.95 Non-member

28 oz. (DMW28) \$33.20 Member / \$34.95 Non-member

DMW



Oyster Shells (OYSTER)

Provide calcium for your martins with Oyster Shells.

Crushed oyster shells are very beneficial to Purple Martins, providing calcium for strong egg shells and strong bones as nestlings grow. Have oyster shells available to martins throughout nesting season. For safety from predators, feed oyster shells in an elevated feeder or tray. Crushed shells are an ideal size for adult and nestling martins.

3 lb (OYSTER3) \$15.15 Member / \$15.95 Non-member

6 lb (OYSTER6) \$17.05 Member / \$17.95 Non-member

12 lb (OYSTER12) \$20.85 Member / \$21.95 Non-member



OYSTER

Weather can play a large factor in the year-to-year success of the Purple Martin population. Since martins are aerial insectivores—they catch all of their insects in flight—they are extremely vulnerable to weather conditions such as excessive cold, heat, or drought. Supplemental feeding with mealworms during times of prolonged cold or weather can help save your colony. Visit purplemartin.org for more information on supplemental feeding.



Martin Gifts



Purple Martin Sanctuary Sign (PMSS)

Designate your site as a haven for Purple Martins!

Bright yellow 12" x 12" sign features beautiful martin artwork. Made of durable aluminum with weatherproof, baked enamel finish. Comes with two mounting holes for installation.

\$19.90 Member / \$20.95 Non-member

PMSS



Purple Martin Earrings (PMEI)

Handcrafted by Purple Martin landlord Nanette Mickle. A perfect gift for that landlord or martin supporter!

- Layered smooth and textured silver—each pair is unique!
- Lightweight and comfortable to wear
- Purple Iolite stone adorns the martin's back
- More choices online

\$66.45 Member / \$69.95 Non-member

PMEI



PMCA Camo Hat (CAMOHAT)

Great hat for daily wear or as a gift!

Medium profile 6-panel hat made of camouflage twill. PMCA logo in blaze orange stitching. Fabric strap with Velcro fastener. See online for more hat and visor styles and designs!

\$15.90 Member / \$16.75 Non-member

CAMOHAT



Purple Martin Bumper Stickers (BUMPER)

Show your love for Purple Martins!

- Vinyl stock, waterproof, laminated, and UV resistant inks
- Non-permanent adhesives
- Approximately 3" x 9.25"

Each \$3.35 Member / \$3.50 Non-member

Both \$4.75 Member / \$5.00 Non-member



BUMPER



More martin gifts available at shop.purplemartin.org



Back

Front

ORDER FORM

Phone: (814) 833-7656
Fax: (814) 833-2451

Customer # from mailing label: _____

Name _____

Address _____

City _____

State/Province _____ Zip/Postal Code _____

For delivery purposes, please include both your street and postal address.

Phone (____) _____

E-mail _____

PMCA Membership—Join Today!

Membership: ☐ New ☐ Gift ☐ Renewal

☐ Student/Senior/Educator. \$26 ☐ Supporter \$75

☐ Basic \$33 ☐ Benefactor. \$150

☐ Canadian \$35 (US\$) ☐ Conservator. \$200

☐ Patron \$50 ☐ Sustainer \$500

A portion of all proceeds goes to the Purple Martin Endowment Fund

Quantity	Code #	Product Description	Unit Price	Total Price
<input type="checkbox"/> I would like a sample issue of the Purple Martin Update			\$1.00	
Merchandise Subtotal				
Shipping				
PA Residents add 6% Sales Tax				
Donation				

Method of Payment

☐ Check Make Checks Payable to: "PMCA" (U.S. funds only)

☐ Credit Card # _____ - _____ - _____ - _____ Expiration Date of Card _____

Membership Amount

Total Amount Enclosed

Orders may ship from multiple manufacturers

*Shipping and Handling Chart

Merchandise Total

Shipping¹

Orders from \$.01 to \$20.00 \$3.95

Orders from \$20.01 to \$50.00 \$8.95

Orders from \$50.01 to \$100.00 . . \$12.95

Orders from \$100.01 and up . . . 13% of merchandise total

Sorry, overnight or rush delivery not available!

¹Canadian Shipping

Canadians should calculate shipping for orders up to \$100 by multiplying "Merchandise Total" by 39%; 32% for orders over \$100. Orders to Saskatchewan, Alberta, British Columbia and New Brunswick must call (814-833-7656) for shipping. Canadians are responsible for paying any duty, tax, brokerage, or import fees assessed at the border.

Please call us at 814-833-7656 for a return authorization number and a "ship to" address. When returning items, actual shipping charges will be deducted from the refund total, not the shipping amount paid. Customer assumes all shipping charges on returns unless the return is due to a defective product or a PMCA error.

Ship to (only if different):

Name _____

Address _____

City _____

State/Zip _____

Dear friend of Purple Martins and the PMCA,

For nearly 30 years we have partnered with you to house and manage Purple Martins. Many of you have shared with us your stories of dedication. Incorporating your insights, we work with manufacturers to build products to best serve landlords and Purple Martins. By making your purchase through the PMCA, you have the satisfaction of knowing all proceeds go towards our education and research. **Thank you** for your purchase from the PMCA Martin Market Place® today, and for contributing to ensure the future of Purple Martins.

PMCA Membership—Join Today!

When you become a PMCA member, you join a community of thousands of people who do a little more, go a little farther for the martins. Your membership supports our research and education efforts to stop the decline of the Purple Martin population. We know that each martin in the sky comes from a dedicated landlord such as you. We appreciate that many of you are members of the Purple Martin Conservation Association—the largest and oldest nonprofit dedicated solely to Purple Martins. As a member, you enjoy discounts on products, you receive the only quarterly magazine dedicated to Purple Martins, and you have the satisfaction of knowing you are helping to preserve this beloved species. Your support makes a difference in the future of Purple Martins.

- \$26 / Student/Senior/Education
- \$33 / Basic
- \$35 / Canadian (US\$)
- \$50 / Patron
- \$75 / Supporter
- \$150 / Benefactor
- \$200 / Conservator
- \$500 / Sustainer

Support Purple Martin Research and Conservation!

Join today and receive 4 issues
of the *Purple Martin Update*
and member discounts on all
products.

**Become a member today at
www.purplemartin.org!**





Aluminum Starling-resistant Adapter Plates

Convert housing from round entrances to starling-resistant Excluder® or crescent entrances aluminum plates.

- Excluder® plate measures approx. 5½" wide x 6" high, designed for use on houses only
- Crescent plate measures 5" wide x 6" high
- Install plates with your choice of screws, bolts, or pop rivets (not included)
- Use requires enlarging original entrance
- Sold singly



Crescent Plate (CRP) \$2.80 Member / \$2.95 Non-member

Excluder® Plate (SEP) \$3.35 Member / \$3.55 Non-member

Plastic Replacement Plates

Flexible plastic plate attaches to any type of housing for changing your round entrances to starling-resistant entrances.

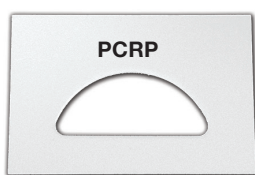
- Hardware not included
- Use requires enlarging original entrance
- Sold singly



Excluder® II Plates (PERP) 4" x 4⅞"

\$3.35 Member

\$3.55 Non-member



Crescent Plates (PCRCP) 3" x 4½"

\$2.45 Member

\$2.60 Non-member



Conley 2 Plates (PC2RP) 3" x 4⅞"

\$3.35 Member

\$3.55 Non-member

Have a Trio house? Doors available on page 29.

Wing Entrapment Protector (WEP)

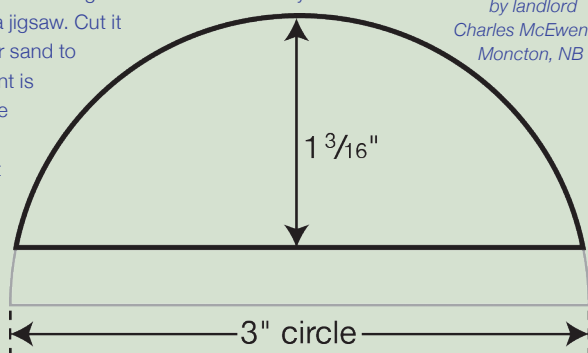
Concerned about possible wing entrapment? Comes with 2 stainless steel screws and is ⅜" thick. Use with most aluminum and plastic houses with crescent, Excluder® II and Clinger entrances. Not for use with Natureline and Troyer gourds. Sold singly.



\$2.15 Member / \$2.25 Non-member

A Starling-resistant Entrance Hole

Diagram shows how to cut starling-resistant entrance for your martin housing. Cut hole with a jigsaw. Cut it slightly small, then file or sand to proper height. Placement is important. Bottom of the entrance hole may be placed flush with, or not more than ¼" above, the porch. If you have ever had starling problems, give this entrance a try.



The crescent entrance designed by landlord Charles McEwen of Moncton, NB



TS8

BEST SELLER!

Trendsetter Housing Systems

Well-crafted with spacious cavities!

Aluminum Trendsetter comes fully assembled. Built to last with doors that slide out for easy access.

- 6" x 11" compartments with removable doors
- 2" square 14' aluminum pole with ground stake and winch and cable system
- 18, 26, 28 units come with 3" square 16' pole standard
- Insulated attic with vents
- Wire mesh subfloors
- Wrap-around porch/rain guard
- Porch dividers
- Perch rods and top perch

	Member	Non-member
8 System (TS8)	\$598.45	\$629.95
12 System (TS12)	\$721.95	\$759.95
16 System (TS16)	\$945.20	\$994.95
18 System (TS18)	\$1167.50	\$1228.95
26 System (TS26)	\$1313.80	\$1382.95
28 System (TS28)	\$1391.70	\$1464.95

Choose between starling-resistant crescent (C) or round (R) entrances. Fully assembled. Wing entrapment protectors included with crescent entrances.

3" Pole Add-On

Add a 3" 16' pole to Trendsetter 8, 12, and 16 systems at time of purchase. (3" pole standard on TS18, 26, and 28.)

\$138.65 Member / \$145.95 Non-member

Trendsetter Insert Trap (TSTRAP)

Easily trap sparrows or starlings in your Trendsetter systems. Fast, spring-loaded trap mechanism that can be used in all Trendsetter or Sunset Inn housing, with round, crescent or Excluder® entrances. Nest tray must be removed prior to use.

\$80.70 Member / \$84.95 Non-member



TSTRAP



TS12Bundle

Over \$50 Savings!

Trendsetter 12 Housing Bundle (TS12Bundle)

Looking for a Trendsetter with all the extras?

Bundle includes the Trendsetter 12-unit house and 2" square pole, with your choice of starling-resistant crescent or round entrances, a set of 12 Trendsetter Nest Trays, the Trendsetter Corner Perches, Universal Sparrow Trap, and a Quick Release Pole Guard.

\$879.65 Member / \$925.95 Non-member

Trendsetter Nest Trays (TSNT)

TSNT

Make nest checks and clean-outs easy with nest trays for Trendsetter and Cedar Suite houses. Constructed of lightweight $\frac{7}{16}$ " wood and aluminum, durable nest trays feature hollowed-out nest bowl to keep eggs and nestlings together. Approx. $10\frac{3}{4}$ " long x $5\frac{1}{4}$ " wide x $2\frac{1}{2}$ " high. For round, crescent, and Excluder® entrances.



8 Nest Trays (TSNT8) \$79.75 Member / \$83.95 Non-member

12 Nest Trays (TSNT12) \$113.00 Member / \$118.95 Non-member

Ventilated Trendsetter Doors (TSVD)

Ventilated Trendsetter Doors give martins relief in hot temperatures.

For TS12 house (VTD12) \$40.80 Member / \$42.95 Non-member

(Doors for other Trendsetters available online)

Trendsetter Covers (TS12COVER)

100% polyester cover provides protection from the elements and keeps unwanted birds out! Velcro and drawstring keep cover snug. 5-year warranty.

For TS12 house (TS12COVER) \$74.05 Member / \$77.95 Non-member

(Covers for other Trendsetters available online)



SSIS



Sunset Inn System (SSIS)

Assembled, with large cavities!

- House comes assembled with starling-resistant crescent (C) or round (R) entrances
- Durable (8 lbs) aluminum house measuring approx 11" wide x 22" deep x 21" tall at the peak
- 6 large ventilated cavities 11" wide x 5 7/8" deep
- Compartments have porch and railing
- 2" square aluminum pole with ground stake, rope and pulley system
- Doors open easily for nest checks
- Insulated attic
- Installed height 14'

Wire mesh subfloors and other Sunset Inn accessories sold online.

House & Pole (SSIS) \$389.45 Member / \$409.95 Non-member

House Only (SSI) \$174.75 Member / \$183.95 Non-member

** Check out the Sunset House Starter Bundle on page 10!*

Multipurpose Pole (MPP)

Want to take one or two martin houses off telescoping poles and mount them on a winch or pulley-operated system? Designed to hold two of any Trio Musselman, Grandpa, Grandma, Sunset Inn, or Coates/WatersEdge houses, for a maximum of 50 pounds. Available in either 2" or 3" pole.

Multipurpose Pole includes:

- 2" or 3" square aluminum pole with heavy-duty steel ground stake
- 2 double-pulleys, rope, and rope cleat
- Top perches, universal mounting plates for houses, and 4 gourd arms
- 4 gourd arms to hang either vertical (V) (Excluder® or SuperGourds) or horizontal gourds (H) (Troyer and Troyer Horizontal Gourds)
- Installed height is 14'

2" Pole (MPP) \$268.80 Member / \$282.95 Non-member

3" Pole (MPP3) \$350.45 Member / \$368.90 Non-member

Multipurpose Pole Winch Add-on for 2" and 3" Poles (MPPWA)

Must be purchased with the Multipurpose Pole.

\$128.20 Member / \$134.95 Non-member

MPP



POPULAR!



BirdsChoice WatersEdge Martin Suites

Features 6" x 12" two-room suites for greater protection from predators and weather. Birds enter entrance hole and make a 90-degree turn, then enter the inner nest room through another hole. Use two houses on the Multipurpose Pole (sold separately, page 26).

- Each suite has its own porch with guardrail and hinged doors for easy access
- Nest rooms have elevated subfloors
- Made of durable, lightweight aluminum

Available with starling-resistant crescent (C) or round (R) entrances. Owl guards available online.

Assembled Suites	Member	Non-member
4 Suites (W2A)	\$136.75	\$143.95
6 Suites (W3A)	\$187.10	\$196.95
8 Suites (W4A)	\$233.65	\$245.95

Unassembled Suites	Member	Non-member
4 Suites (W2)	\$118.70	\$124.95
6 Suites (W3)	\$144.35	\$151.95
8 Suites (W4)	\$187.10	\$196.95



**Free
Shipping!**

BirdsChoice Coates Telescoping Pole (CHD12)

Three-piece telescoping pole with thumbscrew locks for Coates and WatersEdge houses. Extends to over 12' after installation. 16-gauge galvanized steel. Comes with ground socket.

\$105.40 Member / \$110.95 Non-member

**Free
Shipping!**

BirdsChoice Coates Houses

Made of durable aluminum and are available in 8, 12, and 16-compartment models; assembled or unassembled.

- 6" x 6" compartment size
- Hinged doors for cleaning/nest checks
- Door plugs (round entrance holes only) reduce House Sparrow problems
- Porch dividers increase occupancy rates and keep nestlings from wandering
- Ventilated roofs for added coolness

Available with starling-resistant crescent (C) or round (R) entrances.

Owl guards are available online.



**Free
Shipping!**

Assembled Houses	Member	Non-member
8-room (C8A)	\$154.80	\$162.95
12-room (C12A)	\$193.75	\$203.95
16-room (C16A)	\$227.95	\$239.95

Unassembled Houses	Member	Non-member
8-room (C8)	\$110.15	\$115.95
12-room (C12)	\$141.50	\$148.95
16-room (C16)	\$173.80	\$182.95



MSS12



M12K

**Trio Martin "Grandpa" Safety System (MSS12)****Free Shipping!**

Attractive aluminum housing easily lowered for management.

- Twelve 6" x 6" cavities easily enlarged to six (6"x12") compartments **(PMCA highly recommends converting this to a 6 room.)**
- Includes individual flip-up doors, porch railings, dri-nest subfloors, roof perch, door stops
- 14' sectional steel pole with rope and pulley for raising and lowering with safety lanyard lock. Includes ground socket. Assembly required.

\$325.80 Member / \$342.95 Non-member

Trio Pioneer "Musselman" House (M12K)**Free Shipping!**

Similar to Trio "Grandpa", but to be used with Multipurpose Pole or telescoping pole. Assembly required

- Twelve 6" x 6" cavities easily enlarged to six (6"x12") compartments **(PMCA highly recommends converting this to a 6 room.)**
- Aluminum house includes door stops, dri-nest subfloors, top perch, mounting plate for 1 1/4" pole.
- Mount two houses on the Multipurpose Pole (MPP—page 26) or use 14' telescoping steel pole (MPQ—see below).

House w/o pole (M12K) \$164.30 Member / \$172.95 Non-member

Heavy-duty Pole (MPQ) \$148.15 Member / \$155.95 Non-member

- Heavy-duty telescoping pole (MPQ) has quick-lock clamps and comes with ground socket.

Trio Owl Guards

Help protect your martins from large owls and hawks. The galvanized steel wire mesh is vinyl coated and is secured with stainless steel spring clips, which allow for quick installation and removal.

Free Shipping!

For Grandpa/Musselman (OG1) \$71.20 Member / \$74.95 Non-member

For Mini Castle (OGTMC) \$72.15 Member / \$75.95 Non-member

For Castle (OGPMC) \$93.05 Member / \$97.95 Non-member

Spare-O-Door Trap (SD1)

Ingenious trap-door for catching House Sparrows. Replaces doors on all models of Trio martin houses. Remove door the sparrow is using and substitute this trap door. Can also be modified to fit your own homemade, wooden or metal nest-box trap. Comes with bird-removal device. Does not harm birds.

\$37.95 Member / \$39.95 Non-member

Free Shipping!

SD1



PMC24



TMC12

Trio "Castle" System (PMC24)

**Free
Shipping!**

Martins will swirl around your yard with this popular aluminum, winch-operated system for easy raising and lowering. (Assembly required.)

- Twenty-four 6" x 6" cavities easily enlarged to six (6"x12") compartments. **(PMCA highly recommends converting this to a 12 room.)**
- Includes individual flip-up doors, porch railings, dri-nest subfloors, roof perch, door stops
- Comes with a steel pole, winch, and cable system
- Installed height 14'

\$569.95 Member / \$599.95 Non-member

Trio "Mini-Castle" System (TMC12)

**Free
Shipping!**

Attract martins to your yard with this hexagonal aluminum system.

- Twelve 6" x 6" cavities easily enlarged to six (6"x12") compartments **(PMCA highly recommends converting this to a 6 room)**
- Includes individual flip-up doors, porch railings, dri-nest subfloors, star roof perch, and door stops
- Complete with galvanized steel pole and rope-n-pulley system with safety lanyard lock for easy raising and lowering. Ground socket included
- Installed height 14'. Assembly required

\$365.70 Member / \$384.95 Non-member

Door stops, porch dividers, and ground sockets available online.

Starling-Resistant Doors for Trio Houses

Must have!

Discourage starlings from entering your Trio martin housing by using crescent entrance or the Excluder® entrance with revolutionary double-peg design. Aluminum doors fit all Trio houses. Also available as blank doors.

TRD6 6 Crescent Doors

\$19.90 Member / \$20.95 Non-member

TRD



TRD12 12 Crescent Doors

\$34.15 Member / \$35.95 Non-member

SED6 6 Excluder® Doors

\$19.90 Member / \$20.95 Non-member

SED



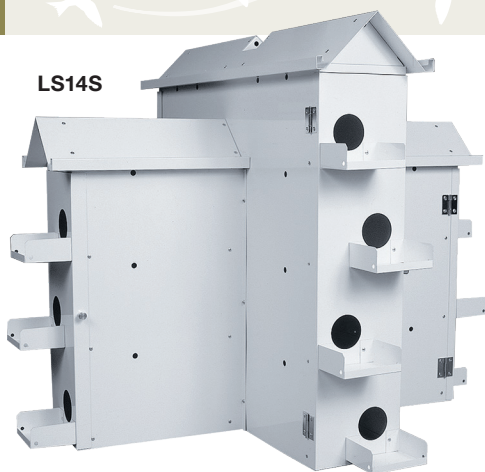
SED12 12 Excluder® Doors

\$34.15 Member / \$35.95 Non-member

**Lonestar Alamo Martin System (LS14S)*****Sturdy Aluminum T-14 Style House.***

- 14 large (6" x 6" x 12") cavities
- Hinged doors for nest checks
- 2" square pole with ground socket and winch & cable system
- Offset entrances and individual porches to increase occupancy, choose crescent or round entrance
- Insulated attic
- Fully assembled, weighs 22 lbs

Available with either starling-resistant crescent or round entrances (includes door stops). Perching rods sold separately.

**LS14S****Lonestar Alamo System (House & Pole) (LS14S)****\$664.95 Member / \$699.95 Non-member****Perching Rods (each) (LSPR)****\$4.30 Member / \$4.50 Non-member****Lonestar Predator Guard (LSG)**

Easily attaches to the pole. Constructed of heavy-duty aluminum. 8" diameter and 24" length. Designed for 2" square pole only.

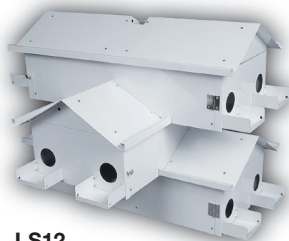
\$47.45 Member / \$49.95 Non-member**Lonestar Nest Trays (LSTRAY)**

White pine bottom and high-impact polystyrene sides. Can be used with any Lonestar house. Sold singly.

\$8.50 Member / \$8.95 Non-member**LSTRAY****Lonestar Goliad System (LS12S)**

Features 12 compartments (6" x 6" x 12") which protect your martins from owls and hawks. Designed for full occupancy with durable aluminum.

- Easy-access hinged doors for nest checks
- 2" square pole with ground socket and winch & cable system
- Offset holes with round or crescent entrances
- Individual porches with guard rails
- Fully-insulated attics
- Expandable to a four, five, or six story house (additional center floors sold separately)
- Nest tray ready

\$664.95 Member / \$699.95 Non-member**LS12**



PWT14S



Included!



Polywood T-14 Martin System (PWT14S)

Extremely durable, 100% recycled plastic. Comes in a white color (no need to paint!) Built to withstand the weather. System includes Polywood T-14 House (PWT14), 3" aluminum pole (T14POLE) and Mounting Kit with Brake Winch (AMKB)

- Comes in a solid white color—low maintenance!
- Corrosion-resistant hardware throughout
- Doors open in front for easy nest inspection and cleaning
- Top perches included
- Large nesting cavities (6½" W x 6" H x 11" D)
- Offset entrances with opening choices of starling-resistant Conley plates (CON) or round (R)

Choose your roof color: white, purple, or green.

Polywood T-14 System (PWT14S) \$979.40 Member / \$1030.95 Non-member

Polywood T-14 House only (PWT14) \$619.35 Member / \$651.95 Non-member

Cedar and cedar with polywood roof available online.

T-14 Martin House Nest Trays

Nest trays make nest inspections and clean-outs a breeze.

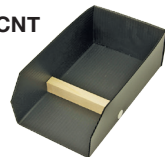
- Can be used in T-14s with starling-resistant or round entrance
- Includes wooden tray dividers to keep martins' nest bowl separate from front of the tray
- Sold singly

PVC T14 Nest Trays (T14PVCNT)

- Shipped flat and easy to assemble

\$3.55 Member / \$3.75 Non-member

T14PVCNT



T14 Nest Trays (T14TRAY)

- Wood base (with nest bowl shape). Metal sides for durability

\$7.15 Member / \$7.50 Non-member

T14TRAY



T-14 & Alamo Insert Trap (T14TRAPM)

Fast, spring-loaded trap. Wide trap entrance allows use in both right-offset and left-offset entrances with any hole type. Nest tray must be removed prior to use.

\$58.85 Member / \$61.95 Non-member



T14TRAPM

All traps require careful monitoring to avoid harming native birds, (including Purple Martins) that might accidentally be captured.



T-14 Metal Pole (T14POLE)

Mount your T-14 house on a sturdy 3" square metal pole!

- Constructed of 1/8" thick T6 Temper aluminum—one of the strongest materials available
- Pole 16' installed, includes ground stake, top cap, top perch rods

Does not include winch and cable. **Purchase T-14 Mounting Kit for Metal Pole (AMKB, see below).**

Note: If you are moving T-14 house from wooden pole specified in the T-14 plans to this metal pole, you will need to purchase the T-14 Conversion Kit (available online).

\$240.30 Member / \$252.95 Non-member

Mounting Kits

Kit includes brake winch, 34' of 3/16" steel cable, pulley assembly, safety bolt, and hardware. Worm gear winch does not include handle, use drill instead.

MKB Kit (with Brake Winch) for wooden pole

\$94.95 Member / \$99.95 Non-member

AMKB Kit (with Brake Winch) for aluminum pole

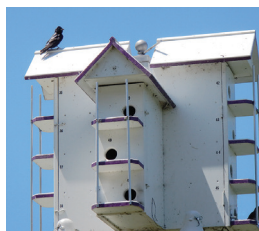
\$111.10 Member / \$116.95 Non-member

ALMKWGB Kit (with Worm Gear Winch) for aluminum pole

\$144.35 Member / \$151.95 Non-member

T-14 Owl Guards (T14OG)

Make it difficult for owls to reach cavity. Guards mount directly to porches. Will not interfere with nest checks. Guards consist of 8 rods (two for each side), mounting clamps, and stainless steel hardware.



T14OG

\$40.80 Member / \$42.95 Non-member

Use Pole guard QRG3 for T14 metal poles

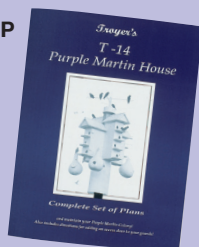
DO IT YOURSELF!

T-14 Martin Plans (T14P)

Plans contain dozens of photos and diagrams detailing how to build your own wooden T-14 martin house incorporating the latest design innovations. Includes plans for making a wooden pole and slide-out nest trays.

\$9.45 Member / \$9.95 Non-member

T14P





Create-A-Rack Gourd Arms (CARGA)

Attach to any telescoping or fixed pole with outside diameter from 1¼" to 2½". Each set will hang three gourds, one on each arm, with aluminum hooks included. Will not work with winch or rope/pulley systems. **Pole and gourds not included.**

\$41.75 Member / \$43.95 Non-member

CARGA



Roosting Arms (RA)

Add gourds to poles with an outside diameter from 1¼" to 2¾", designed for use on telescoping or fixed poles. Will not work with winch or rope/pulley systems. Aluminum arms and mounting brackets, stainless steel hardware. Contains three arms, brackets, and hardware. **Pole and gourds not included.**

One Set-3 arms (RA1) \$50.30 Member / \$52.95 Non-member

Three Sets-9 arms (RA3) \$106.35 Member / \$111.95 Non-member



Universal Gourd Hanging Arms (UGHA)

Add 4 gourds to the bottom of wood or aluminum housing. Comes in a set of 4 aluminum arms, specify vertical (V) gourd arms (for PMCA Excluder® Gourds or SuperGourds) or horizontal (H) gourd arms (for Troyer and S&K Gourds.) Stainless steel hardware included. **Gourds not included.**

\$47.45 Member / \$49.95 Non-member

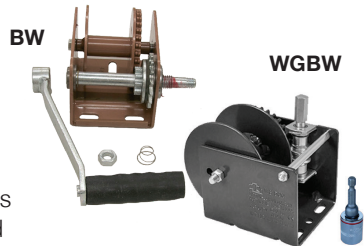


Brake Winch and Worm Gear Winch (BW/WGBW)

Brake winches automatically apply a constant hold should your hand slip off the handle while raising or lowering. Not recommended for housing weighing less than 50 pounds. Worm Gear Brake Winch is powder coated with permanently lubricated bearings. WGBW does not include handle, attach a cordless drill for easy raising and lowering.

Brake Winch (BW) \$72.15 Member / \$75.95 Non-member

Worm Gear (WGBW) \$90.20 Member / \$94.95 Non-member



HD Nature Camera (HDCAM)

Color camera with infrared night vision and a microphone. Connects to any television or video compatible computer. Includes: color camera, 100' AV/power cable and 12 volt power adapter. Not waterproof.

\$118.70 Member / \$124.95 Non-member





Adult Male

Adult males are the only Purple Martins to have iridescent, purple feathers covering the entire body. They do not get their full plumage until the 3rd calendar year. Undertail coverts—solid purple.



Adult Female

Adult females have more purple on their head and back than subadult females. They will not have any purplish feathers on their chest, belly, or undertail. Undertail coverts—can also vary, much darker than subadults—all brown/taupe feathers with a white rim on the outer edge.



Subadult Male

Often the hardest to identify, will have at least one, but usually many solid-purple feathers either on their chins, throats, bellies, or undertails. Undertail coverts—can vary greatly, some will have several purple feathers, others few.



Subadult Female

Subadult females have a much lighter purple to brownish color on their back feathers. Undertail coverts—may vary greatly, all white or light-colored feathers with brown pinstripes down the center.



Hatching Year

The sex of a hatching year or juvenile bird cannot be determined by sight. Hatching year Purple Martins will have a stubby tail—shorter than the wing feathers. They are a dull brownish-grey color and still have yellow inside their beak.





Nest Identification Guide

Purple Martin—Nest constructed from twigs, straw, and needles—may include mud at the front of the nest. Nest cup lined with green leaves.



Tree Swallow—Nest constructed from straw and fine grasses—profusely lined with feathers.



Eastern Bluebird—Nest constructed from grasses, straw and weed stalks.



House Wren—Bulky nest made with twigs and topped off with cup of grasses, plant fibers, feathers and hair—may have several nests of twigs.



House Sparrow—Large, bulky nests make out of straw, grasses, weeds and trash. Nest fills the entire compartment with just a small hole for the bird to enter.



European Starling—Bulky, slovenly nests from coarse grasses, twigs, straw and corn husks. Large nests, but do not fill the compartment.



Barn Swallow—Nests are made out of mud and lined with fine grasses or feathers. Found in the corners of buildings, porches or decks.



Native Species

Eastern Bluebirds, Tree Swallows, House Wrens, Barn Swallows

If any of these native species try to nest in your martin housing, close it and put up a nestbox or gourd with a 1½" entrance, placed about 30–50' from your martin housing. House Wrens use a 1" entrance. Do not close housing if they have eggs or nestlings. Re-open the martin housing once the new housing has been accepted by the competitor. Barn Swallows nest under roofs or eaves.



Non-Native Species

House Sparrows and European Starlings.

Both the House Sparrow and European Starling are non-native species and should never be permitted to nest in martin housing. They will take over martin compartments, destroy eggs, and kill nestlings. They can also prevent martins from nesting and often injure or kill adults. Successful martin landlords do not tolerate these non-native competitors. Starlings and House Sparrows are not protected and may be legally controlled by trapping, shooting.



Tree Swallow



European Starling

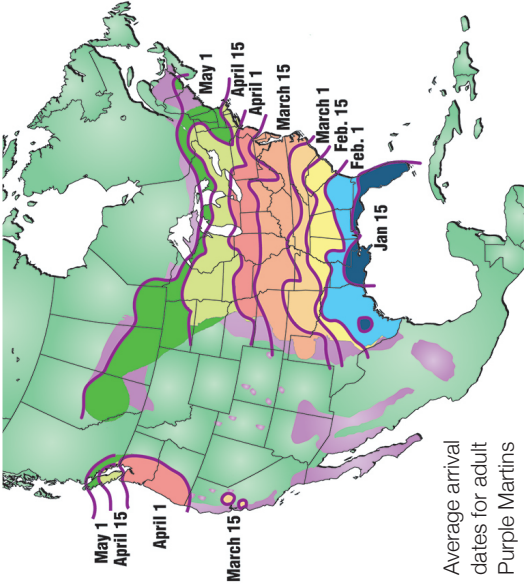


Barn Swallow

Purple Martin Imposters

These birds are often mistaken for Purple Martins. Barn Swallows and Tree Swallows are in the same family as the Purple Martin. Tree Swallows are smaller with a snow-white belly and an iridescent greenish/blue back. They will nest in bluebird boxes or gourds and sometimes take over martin housing. Tree Swallows line their nests with feathers; Purple Martins use green leaves. Barn Swallows are smaller, have deeply forked tails and orange breasts. They build mud cup nests in barns, sheds, or on porches. European Starlings are larger than a martin and have a long yellow beak. If you see a 'Purple Martin' at your birdfeeders or feeding on the ground, it's probably a starling.

Where are your Purple Martins?



Visit the PMCA's Scout-Arrival Study to track this year's Purple Martin migration.
www.purplemartin.org/scoutreport

www.purplemartin.org • 814-833-7656



Purple Martin Conservation Association
301 Peninsula Drive, Suite 6
Erie, PA 16505

NONPROFIT ORG
US POSTAGE
PAID
PITTSBURGH PA
PERMIT NO. 5605



Support Purple Martin Research and Conservation!

Join today and receive 4 issues of the *Purple Martin Update* and member discounts on all products.



More products available online
at shop.purplemartin.org