



Manufacturing Attractive Bird Products

71024 Co. Rd. 13 Nappanee, IN 46550 • Toll Free (866) 546-0423
(574) 773-4975 • FAX (574) 773-7282

12Up18 Add-A-Section

Thank you for purchasing this product from the Purple Martin Conservation Association. Your purchase helps support our education, conservation, and research projects!

Assembly Instructions: Please read all instructions thoroughly before beginning!

Step 1: Take Down Existing Gourd Rack

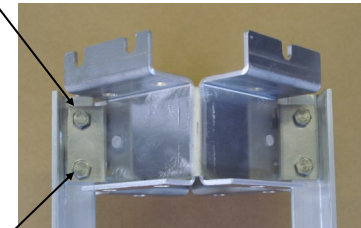
Remove all arms from the existing Deluxe Gourd Rack hub. Remove the pole from the ground stake and lay the pole over a bucket (or a similar object) to protect the top perches. An adult of average strength can typically do this alone, but to be safe, have another person assist with this task.

Step 2: Remove Hub From Pole

Unhook the quick link (carabiner) from the hub. Separate the pole sections or remove the rope winder and remove the hub from the pole. Since the pole sections are held together by friction and gravity, no hardware will need to be removed to separate them (unlike the rope cleat).

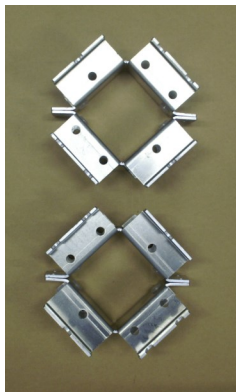
Step 3: Disassemble Hub

Disassemble the hub by removing all the 1/4 x 3/4" bolts (four bolts per level of arm brackets). Keep each pair of arm brackets together (don't mix). HINT: line them up in the order that they were on the hub. It is not necessary to keep the existing verticals bar; they will be replaced in this upgrade.



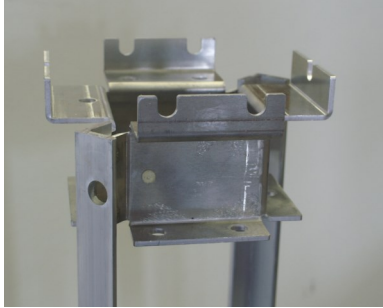
Step 4: Placement Of The Arm Bracket Pairs

Position the arm bracket pairs exactly as shown in the photo. The proper arrangement is to have a pair of brackets so that the holes alternate between 1 and 2. If a mistake is made whereby the assembled system does not have alternating "hub levels," the gourds in one layer will rest on the gourds of the row below.



Step 5: Attach Arm Brackets to Vertical Bars

Look for the vertical bar that has a larger hole (for the rope's quick link). The end with the larger hole is the top. The other bar is symmetrical with no large hole. Attach the top pair of arm brackets to the vertical bars. Be sure that the u-shaped notches of the arm brackets are pointed upward. Work down the row of paired brackets making sure to alternate configuration types.



When you complete the hub, you should be able to look down one side of the hub and see alternating numbers of u-shaped notches in each row (see photo). Tighten all bolts securely.



Step 6: Reattach Hub To Pole

Slide the hub onto the pole; be sure that the correct end of the hub is up and the quick link's hole on the hub is directly below the pole's eyebolt pulley. Making sure the rope is not twisted around the pole.

Attach the rope's quick link to the hub. Reassemble your pole to its original state. If you remove the rope winder, be sure to orientate it so that the rope is wound directly underneath the large eyebolt and pulley. The rope winder's bolt must be securely fastened. Mounting the winder 4' above ground level will allow you to mount a pole guard just below the rope winder; pole guards work best if mounted 4' above ground. (Please Note: Pole guards are available from the PMCA. They are strongly recommended as rat snakes and raccoons will climb metal poles and raid nests.)

Step 7: Erect The Pole

While the pole is still horizontal, slide the assembled hub so that it is butted next to the rope winder. This is done to prevent the hub from abruptly sliding down the pole when erecting the pole. Place pole vertically over the ground stake and slide it down to ground level. An adult of average strength can typically do this alone, but to be safe, have another person help assist this step.

Step 8: Insert Arms In Arm Brackets/Attach Gourds To Arms

Attach arms to gourd rack. The end of the arm with the small holes drilled in it is the end that the gourd will attach to; therefore, insert the opposite end into the hub assembly. PLEASE NOTE: The Deluxe Gourd Rack has 3 different kinds of arms: straight, right bend, and left bend. The straight arms go into the arm brackets with single holes. Right bend arms (bundled with red rubber bands) go into the hole on the right side of hub bracket with two holes, as looking out from the pole (left side as landlord looks at hub). Left bend arms (bundled together with blue rubber bands) go into the hole on the left side of the hub bracket with two holes as looking out from the pole (right side as landlord looks at hub). Be sure that the gourd arms are seated all the way down into the u-shaped slot. Slide the gourds onto the arms and insert one hitch pin per arm to keep the gourd from sliding off.

