

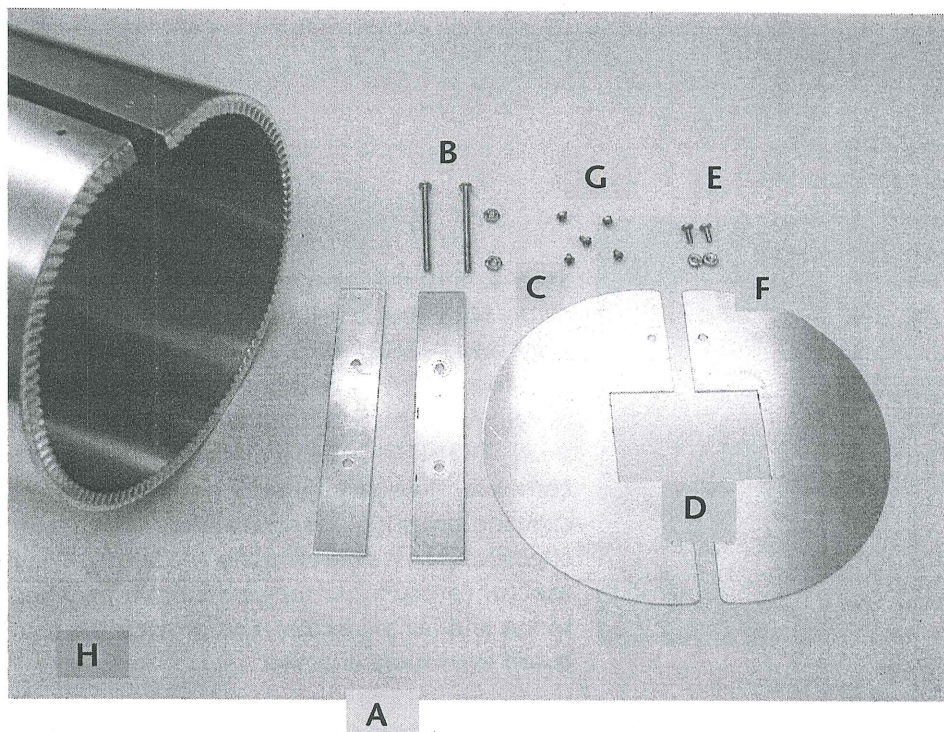
Pole Guard C Assembly Instructions

For 2" Square Poles

Thank you for purchasing this product from the PMCA. We're glad to have you as a partner in martin conservation. Your purchase helps support the education, conservation, and research projects of the PMCA, a nonprofit organization. We hope this product will give you many years of use!

Parts List

Part	Q'ty	Description
A	2	1/8" x 1" x 7" aluminum clamp pieces
B	2	10-24 x 2-1/2" stainless steel machine screws
C	2	10-24 stainless steel nuts
D	2	Aluminum top halves to make top plate
E	2	8-32 x 3/8" stainless steel machine screws
F	2	8-32 stainless steel nuts
G	2	6 x 1/4" Phillips pan head sheet metal screws
H	1	aluminum tube

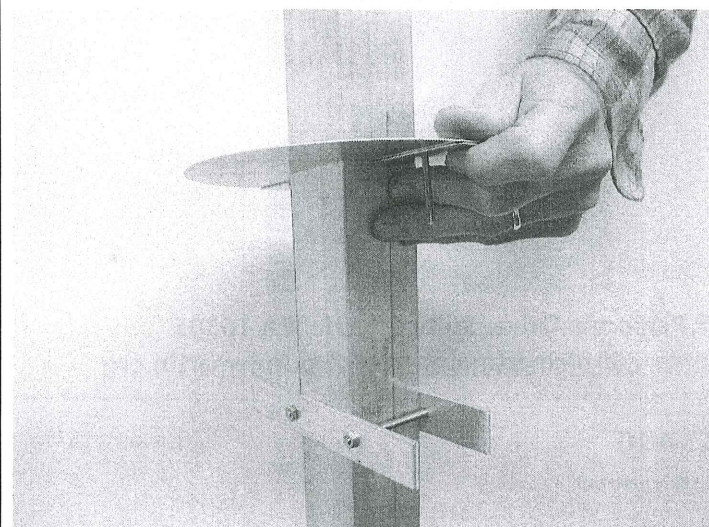
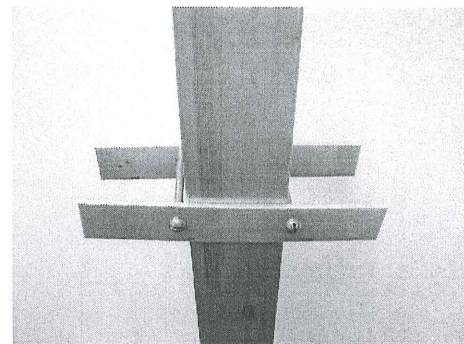


Assembly Instructions

Read all instructions thoroughly before beginning!

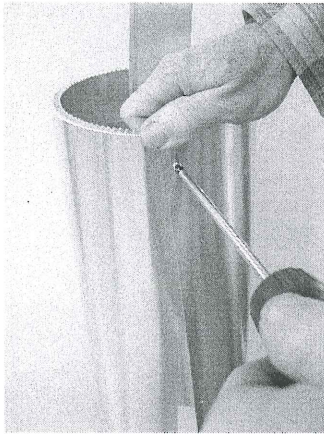
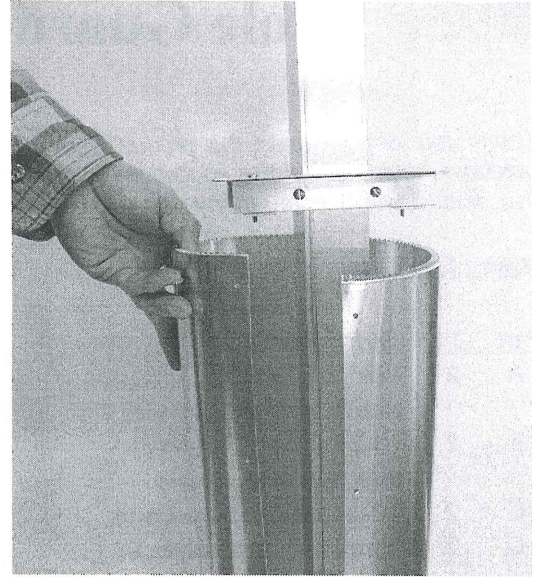
Step 1. Attach the two pole clamps (A) at your chosen mounting height (ideally about 4' off ground) using the two 10-24 x 2-1/2" stainless steel screws (B), and the two 10-24 stainless steel nuts (C). Make sure the

mounting clamps are level to the ground and parallel to each other as you tighten them securely.



Step 2. Using the two 8-32 x 3/8" stainless steel screws (E), assemble the two top halves (D) together forming an overlapping square over the mounted clamp pieces. When overlapped, these two top halves will form a circular disk. Tighten the screws, using one 8-32 stainless steel nut (F) per screw. Screws should be pointing toward the ground after installation on the pole.

Step 3. There is a right way and a wrong way to mount the aluminum tube (H) on the mounted top halves. Doing it the wrong way could permanently distort and crease the tube. **The right way:** with the crimped end of the tube up, place it around the pole BELOW the mounted clamp pieces by spreading it open NO MORE THAN THE DIAMETER OF THE POLE! It should now slide up over the mounted clamp assembly by spreading it open only about an inch or two. The wrong way: IF YOU ATTEMPT TO SPREAD THE TUBE OPEN the entire width necessary to fit directly over the clamp assembly, you could bend and permanently distort the tube.



Step 4. Rest the crimped upper lip of the tube (H) on the top of the circular mounting plate. Note that one long edge of the tube contains two large holes, the other edge two small holes. THE LARGE HOLES MUST OVERLAP THE SMALL HOLES before receiving the two #6 x 1/4" Phillips pan head sheet metal screws (G), or the screws will strip out the metal. Align the two holes and start the 1/4" screws through the large holes, into the small. DO NOT OVERTIGHTEN the screws or the metal may strip. Assembly is now complete. This pole guard is designed to wobble slightly when touched by a pole-climbing predator. This movement, along with the guard's slick surface, makes it doubly effective against pole-climbing predators. The manufacturer recommends applying car wax (or carnauba) to the aluminum tube when installing the guard and once in the spring and fall thereafter. This protects the aluminum from oxidation and will make the guard even more effective.

Please note: In areas of the country with large snakes, a net trap may be needed in addition to a pole guard! Simply wrap and secure "bird netting" around the pole; the photo depicts this net trap under the rope winder. See *Purple Martin Update 12(4)* for more details.



Purple Martin Conservation Association • 301 Peninsula Drive, Suite 6 • Erie, PA 16505
(814) 833-7656 (phone) • (814) 833-2451 (fax) • www.purplemartin.org • info@purplemartin.org

GUARDC: 4/10

©2007 PMCA All rights reserved