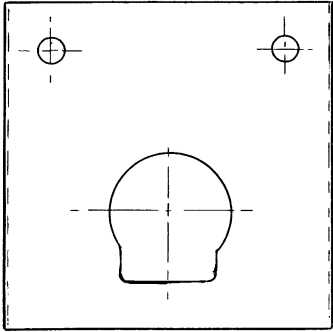
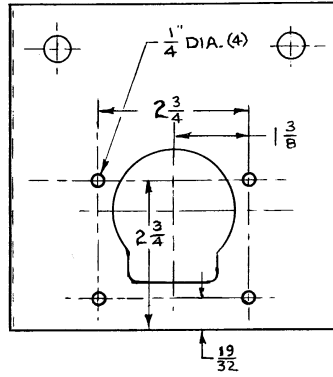


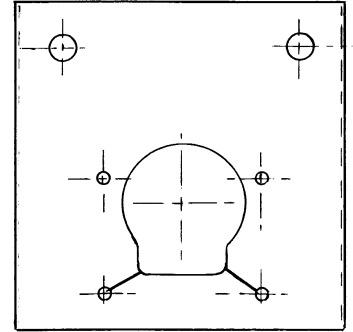
The starting point: a typical Trio martin house door.



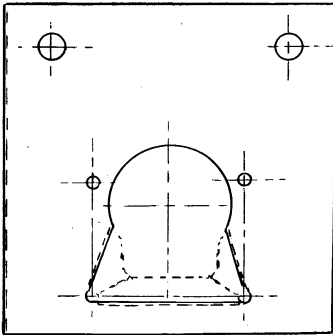
Step 1: Drill (4) 1/4" diameter holes as shown below.



Step 2: Cut in 2 places as shown below using tin-snips

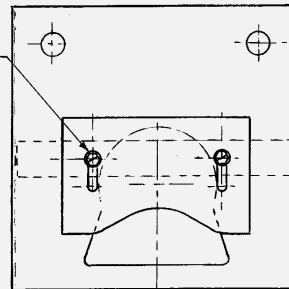


Step 3: Bend door material using a vise and pliers.

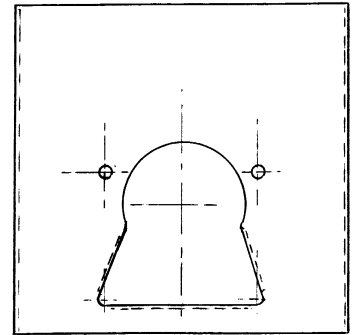


Step 8: Sheetmetal screw, slot hex washer head #6 x 3/8" (2) required.

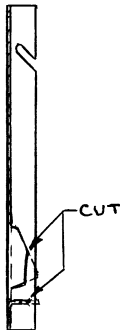
The completed door should appear as shown at right:



Step 4-a: Cut away excess material from bent portions.



Step 4-b: A side view showing material to be removed.



2002-2003 Prices

Ron Seekamp,
6371 Madison St., NE
Fridley, MN 55432
Phone: 763-571-7824

2002-2003 Prices

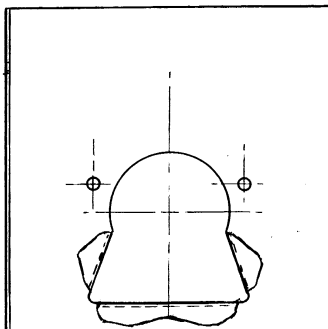
	6 doors	12 doors	18 doors
Modify			
Complete	\$7.50	\$14.50	\$20.50
Shipping	\$4.50	\$7.50	\$9.50
Total	\$12.00	\$22.00	\$30.00

If you would like the vinyl, adjustable plates only, they can be ordered separately, and sent to you more quickly. The cost is \$6.00 for a minimum order of six (includes shipping cost).

Step 5: Complete forming as shown with vise and hammer. (Side view cross section shown.)

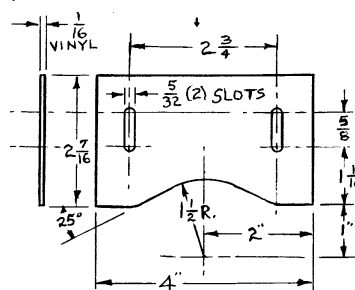


Step 6: After forming is complete the door should look like this from the inside looking out. File off any sharp edges.



To complete the adjustable starling-resistant entrance, two additional parts are required:

Step 7-a: The adjustable vinyl plate (below). Wood is optional



Step 7-b: The wood cross bar (below) anchors the screws used to hold the vinyl plate.

